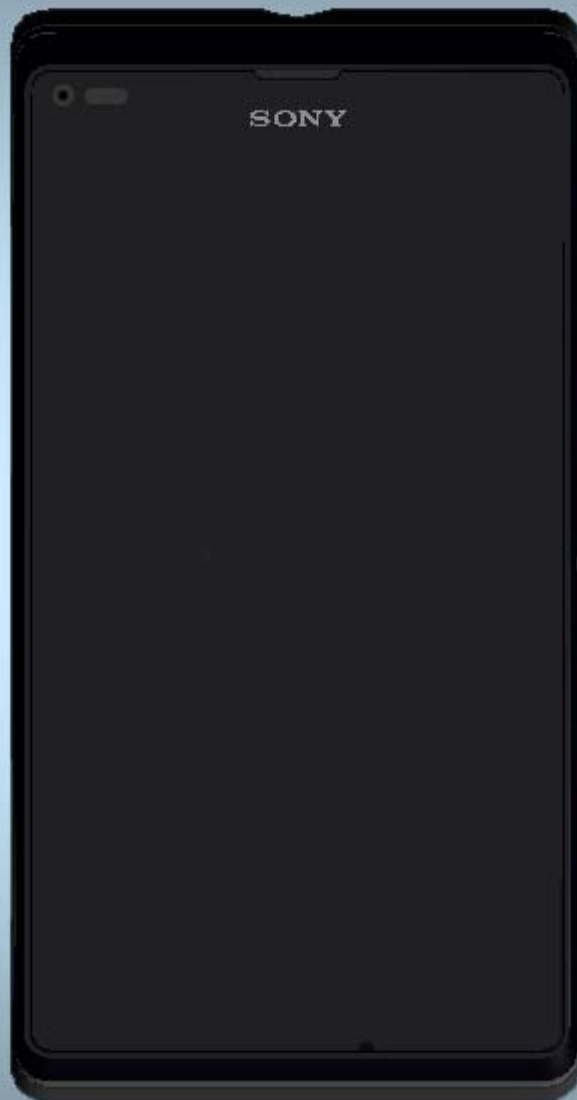


Working Instructions

- mechanical -



C2104, C2105, S36h

CONTENTS

1	Exterior Views.....	4
1.1	C2104, C2105, S36h.....	4
2	Tools	5
3	Disassembly.....	6
3.1	Battery Cover.....	6
	Disassembly.....	7
3.2	Battery	7
3.3	Middle Frame Assembly	8
3.4	Sub PBA assembly.....	10
3.5	Main PBA (a) & RF Cable (b)	11
3.6	Front Housing LCM TP Assembly	12
4	Replacement	14
4.1	Battery Cover.....	14
4.2	Middle Frame Assembly	14
4.3	Sub PBA Assembly	14
4.4	Front Housing LCM TP Assembly	14
4.5	Conductive cloth for TP IC	15
4.6	Conductive cloth Main camera	16
4.7	CU Label.....	17
4.8	Screw.....	17
4.9	Film Main Camera.....	18
4.10	Film RF Cable	18
4.11	Film RF Hole	19
4.12	Film Side Key.....	20
4.13	NFC Antenna.....	21
4.14	Loudspeaker & Speaker Adhesive	22
4.15	Main Camera.....	24
4.16	Rubber PL Sensor	27
4.17	Earspeaker & Receiver Adhesive	28
4.18	RF Cable.....	30
4.19	Rubber 2nd MIC	31
4.20	Power Key	32
4.21	Rubber Main MIC	33
4.22	Water Intrusion Label.....	34
4.23	Label NFC.....	35
4.24	TP IC Adhesive	36
4.24	Board Swap – Replacement	37
4.25	Board Swap – Change Label	37
4.26	Board Swap – Customize of Software	37

5 Reassembly..... 38

5.1 Front Housing LCM TP Assembly 38

5.2 Main PBA (a) & RF Cable (b) 40

5.3 Sub PBA Assembly 42

5.4 Middle Frame Assembly 44

5.5 Battery 47

5.6 Battery Cover 47

6 Country of Origin Barcodes for Brazil/VIVO Labels..... 49

7 Revision History 50

For general information about mechanical repair related issues, refer to
1220-1333: Generic Repair Manual - mechanical

1 Exterior Views

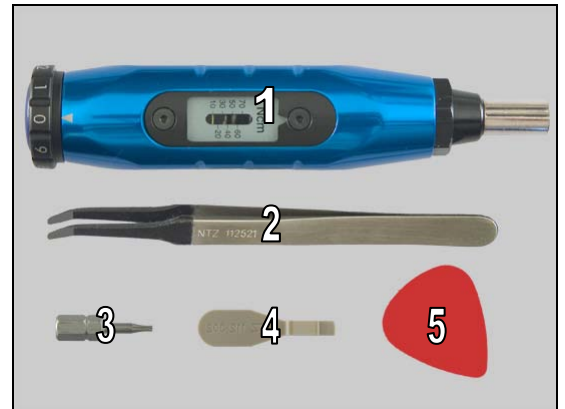
1.1 C2104, C2105, S36h



2 Tools

SPECIAL TOOLS

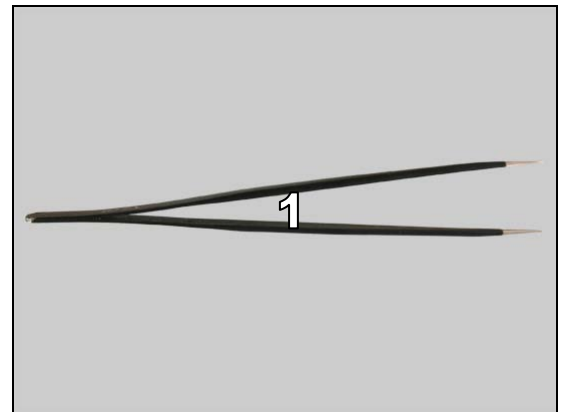
1. Torque Screwdriver
2. Flex Film Assembly Tool
3. Bits (T5)
4. Front Opening Tool
5. Guitar Pick



For part no's on the tools above, refer to the 'Tools Catalogue/Matrix'!

STANDARD TOOLS

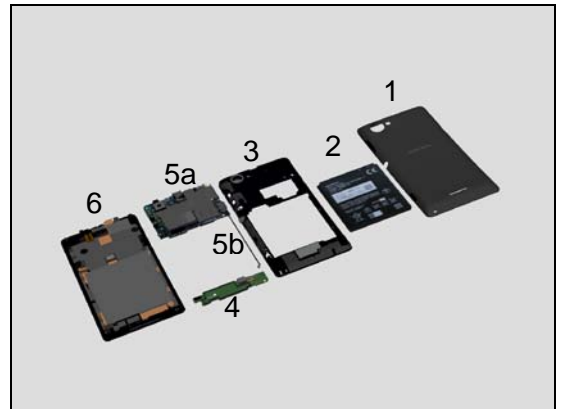
1. Tweezers



3 Disassembly

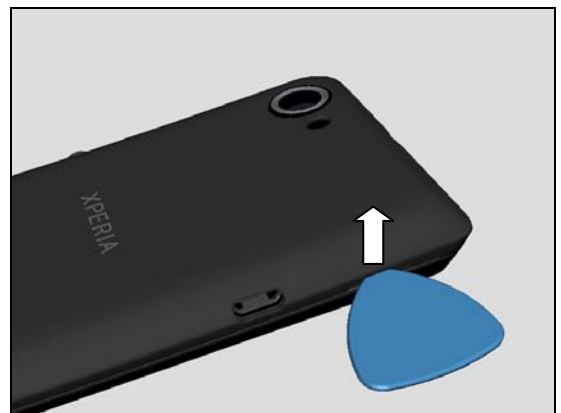
The disassembly is done in the following order:

1. Battery Cover
2. Battery
3. Middle Frame Assembly
4. Sub PBA assembly
5. Main PBA (a) & RF Cable (b)
6. Front Housing LCM TP Assembly



3.1 Battery Cover

Insert a finger or Guitar Pick into the gap as shown in picture to release the hooks of the Battery Cover.



Open the top side of Battery Cover first.



Push Battery Cover back towards bottom side.



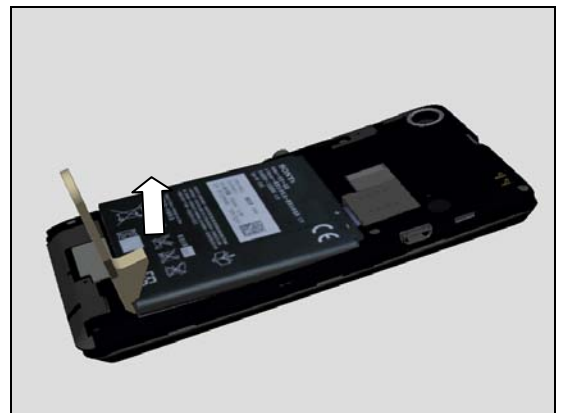
Disassembly

Remove the Battery Cover.

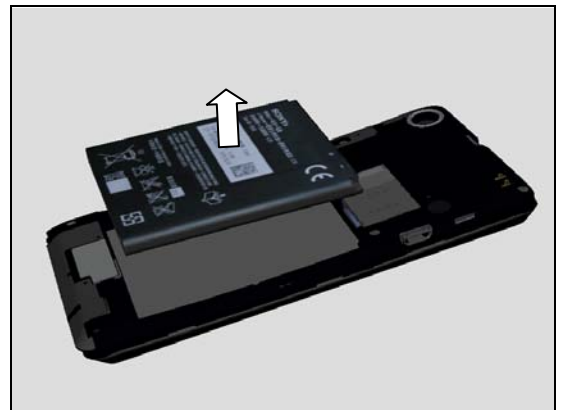


3.2 Battery

Insert a finger or Front Opening tool to Loosen the bottom side of battery.

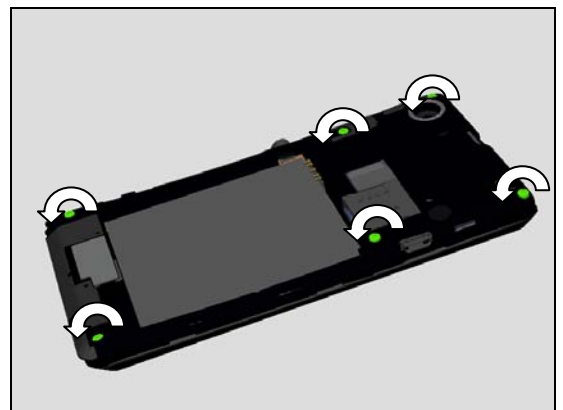


Remove the Battery.



Remove these six Screws by using a screwdriver with Bits (T5).

Scrap! Not to be reused!

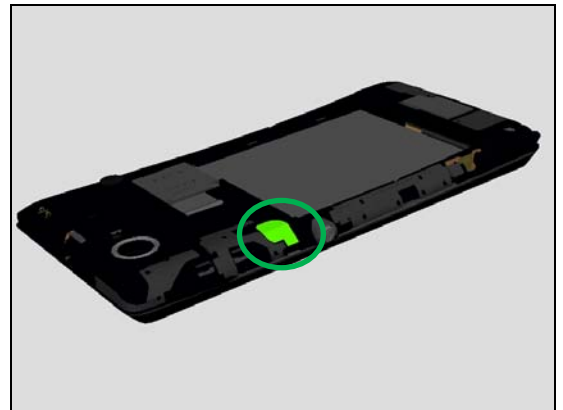


Disassembly

3.3 Middle Frame Assembly

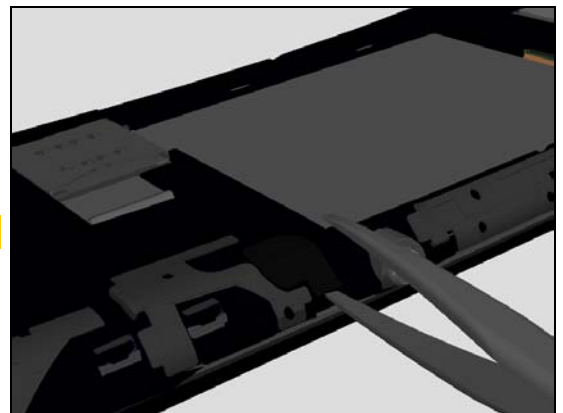
Turn the phone around 180 degree.

Film RF Cable is shown in picture located on Middle Frame Assembly.



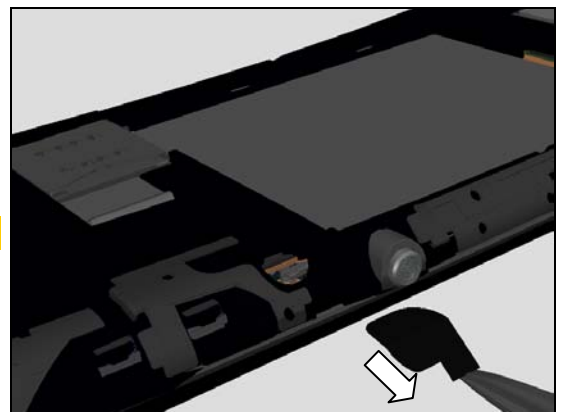
Pick up the Film RF Cable from Middle Frame Assembly.

Scrap! Not to be reused!

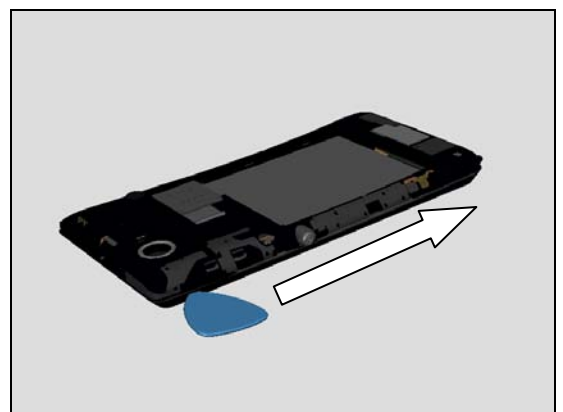


Remove the RF Cable Film.

Scrap! Not to be reused!



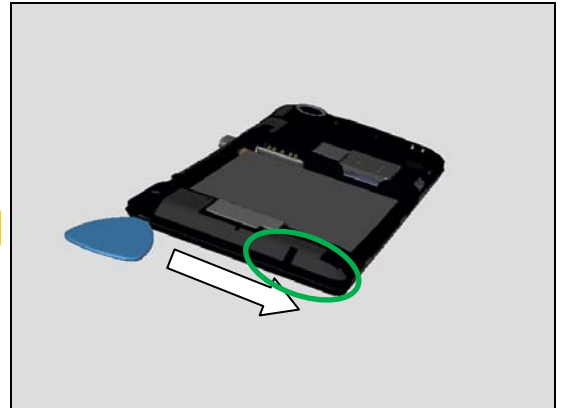
Slide Guitar Pick along Middle Frame Assembly as shown in picture, to release the side hooks.



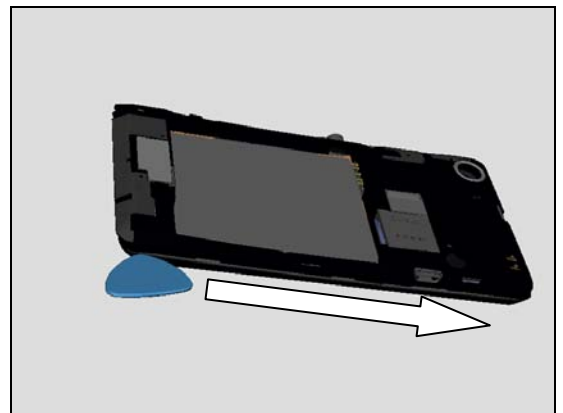
Disassembly

Turn around and release the Bottom side hooks.

Don't insert Guitar Pick too deep at right corner!

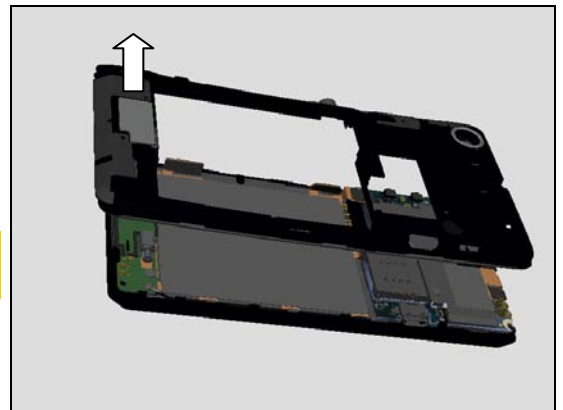


Turn around and release the 3rd side hooks.



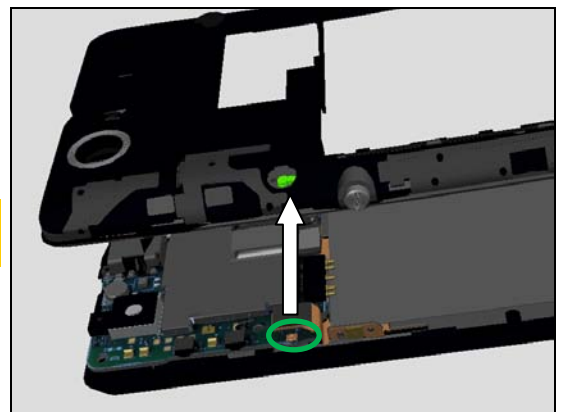
Lift up the bottom side first and remove the Middle Frame Assembly carefully.

RX Diversity Cable connector is disassembled then during Middle Frame Assembly removal.



RX Diversity Cable connector is shown in picture.

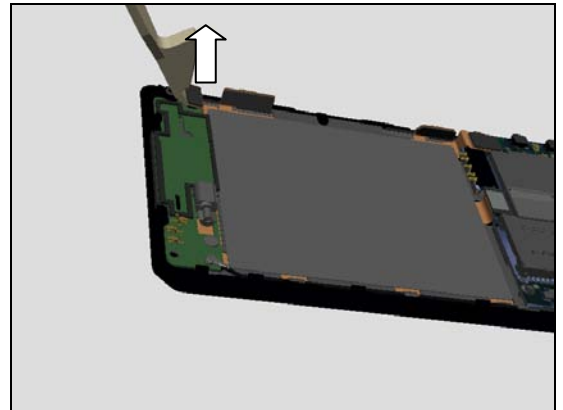
RX Diversity Cable connector is disassembled then during Middle Frame Assembly removal.



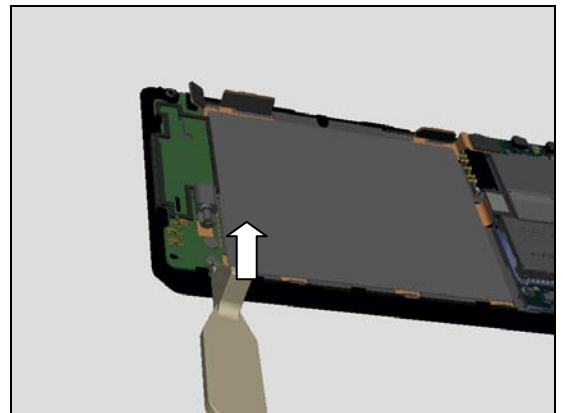
Disassembly

3.4 Sub PBA assembly

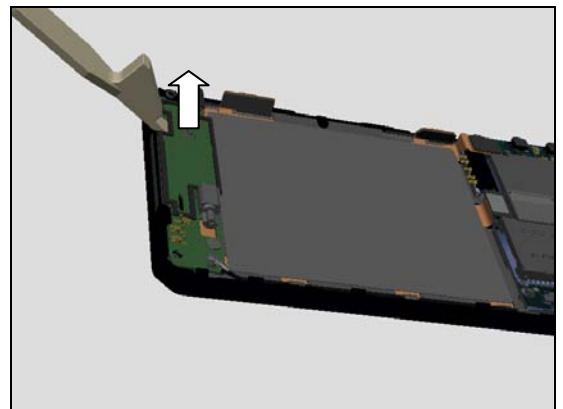
Open the BtB connector of Side Key FPC on Sub PBA assembly.



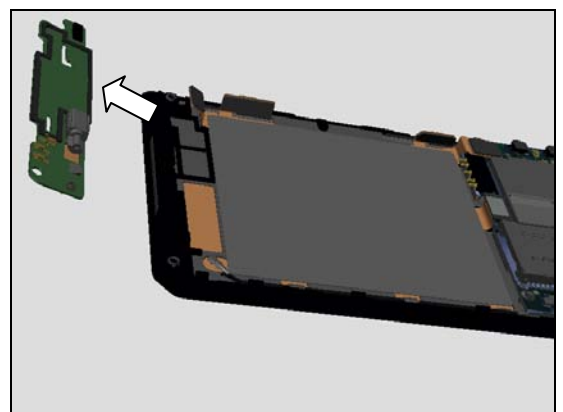
Open the RF cable connector on Sub PBA assembly.



Insert Front Opening tool as shown in picture to release the Sub PBA assembly hooks.



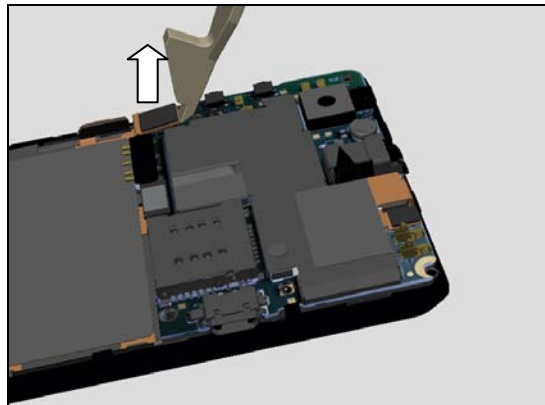
Remove the Sub PBA assembly.



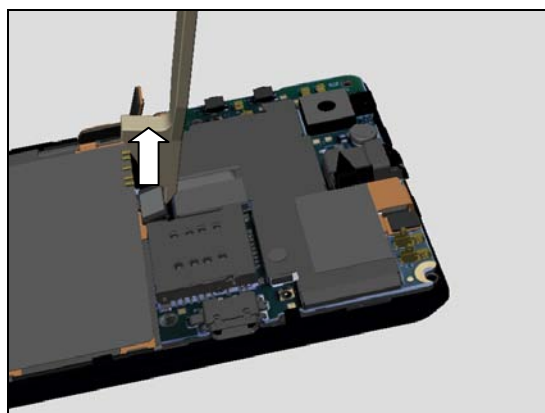
Disassembly

3.5 Main PBA (a) & RF Cable (b)

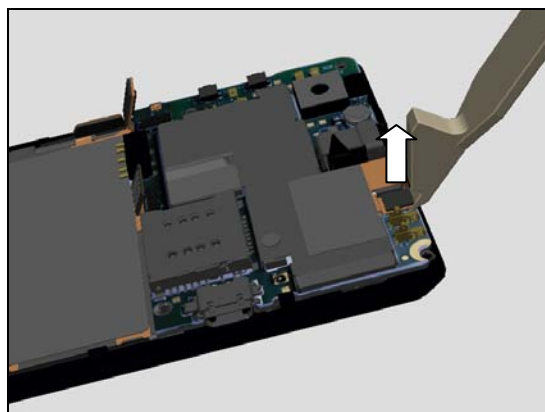
Open the Side Key FPC BtB connector.



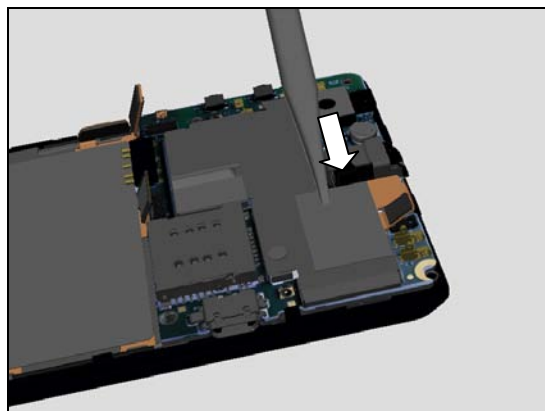
Open the LCM BtB connector.



Open the Touch Panel FPC BtB connector.

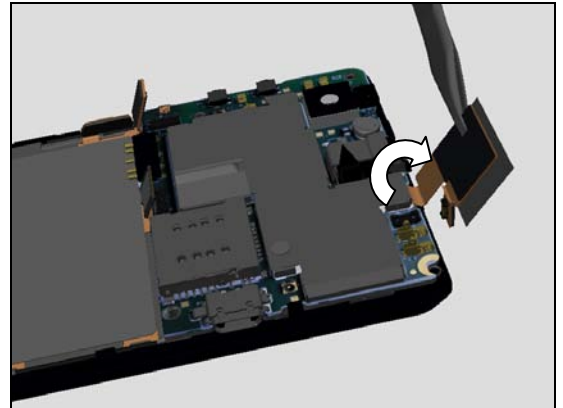


Insert Tweezers at the shielding corner to disassemble Touch Panel FPC from Main PBA.

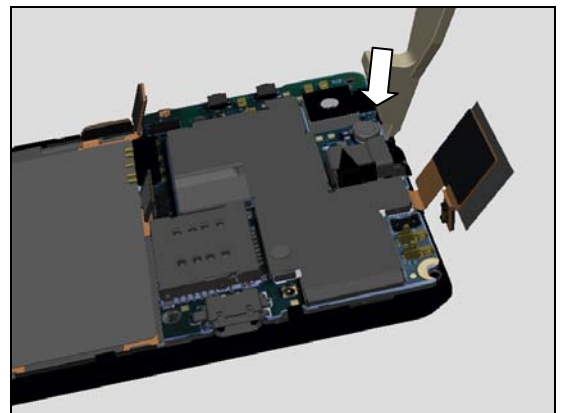


Disassembly

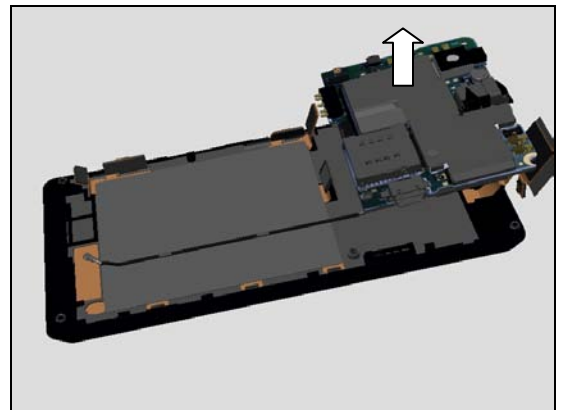
Turn over the Touch Panel FPC.



Insert the Front Opening tool as shown in picture to release Main PBA hooks.

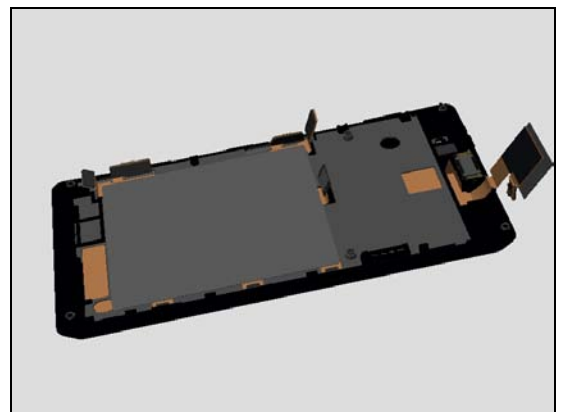


Remove Main PBA and RF Cable.



3.6 Front Housing LCM TP Assembly

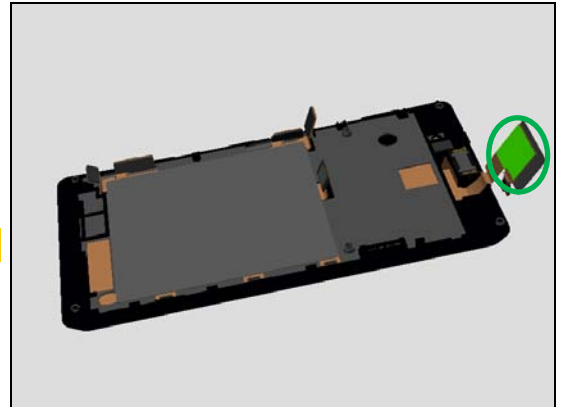
Front Housing LCM TP Assembly as shown in picture.



Disassembly

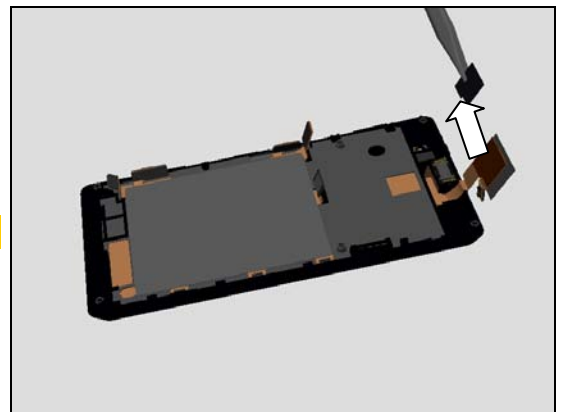
TP FPC adhesive is shown in picture.

Note: TP FPC adhesive can't be reused, Scrap!



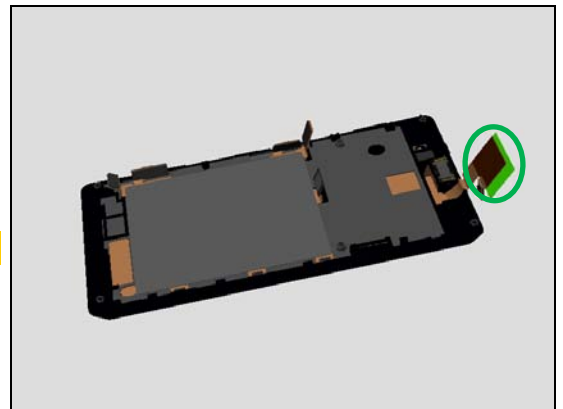
Remove the TP FPC adhesive.

Note: TP FPC adhesive can't be reused, Scrap!



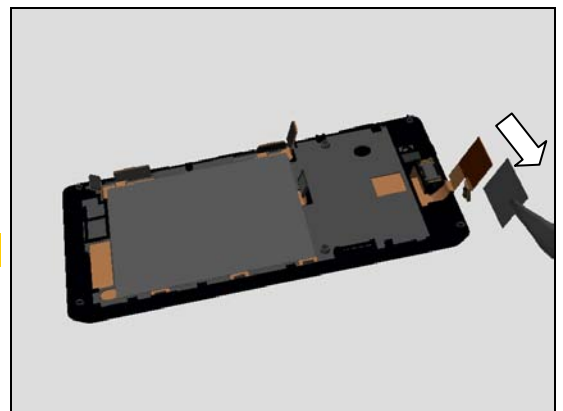
Conductive cloth for TP IC is shown in picture.

Note: Conductive cloth for TP IC can't be reused, Scrap!



Remove the Conductive cloth for TP IC.

Note: Conductive cloth for TP IC can't be reused, Scrap!



4 Replacement

4.1 Battery Cover

Follow the 3.1 Disassembly instructions!

Prepare a new Battery Cover.

Prepare a new Label NFC.

Prepare a new NFC Antenna.

Follow the 4.23 Reassembly instructions!

Follow the 4.13 Reassembly instructions!

Follow the 5.6 Reassembly instructions!



4.2 Middle Frame Assembly

Follow the 3.1 – 3.3 Disassembly instructions!

Prepare a new Middle Frame Assembly.

Follow the 4.10, 4.11, 4.14, 4.20, 5.4 – 5.6, Reassembly instructions!

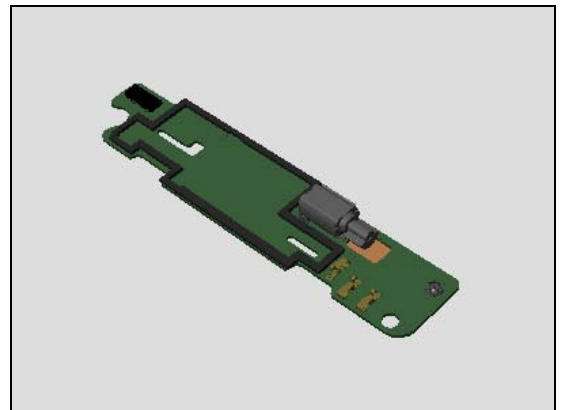


4.3 Sub PBA Assembly

Follow the 3.1 – 3.4 Disassembly instructions!

Prepare a new Sub PBA Assembly.

Follow the 4.21, 4.22, 5.3 – 5.6 Reassembly instructions!

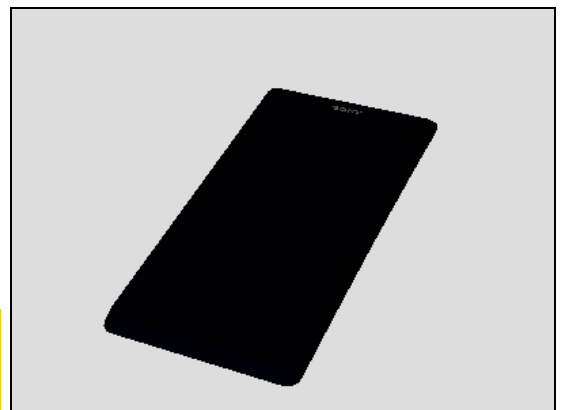


4.4 Front Housing LCM TP Assembly

Follow the 3.1 – 3.6 Disassembly instructions!

Prepare a new Front Housing LCM TP Assembly.

Follow the 5.2 – 5.6 Reassembly instructions!



Note: Calibrate the Touch Panel/ Proximity sensor/Light sensor 1275-0758 Trouble Shooting Application – mechanical after replacement.

Replacement

4.5 Conductive cloth for TP IC

Follow the 3.1 – 3.3 Disassembly instructions!

Prepare a new Conductive Cloth for TP IC.

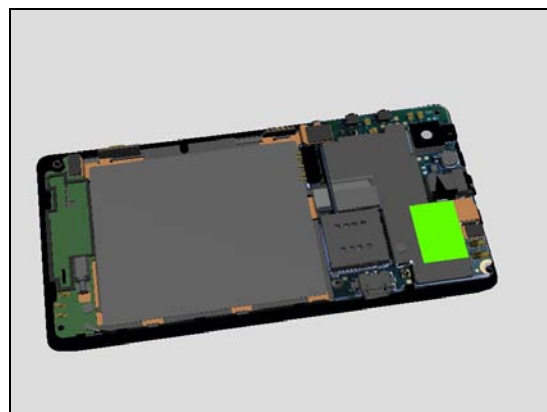
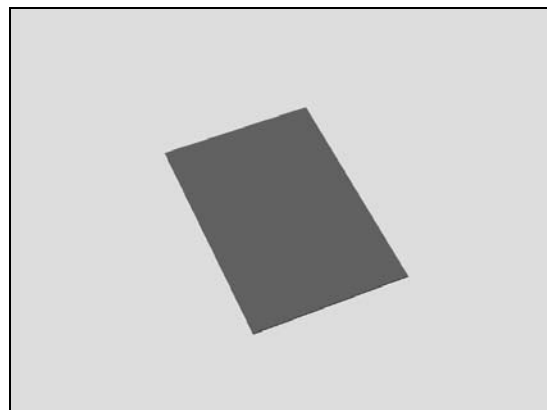
Follow the 5.4 – 5.6 Reassembly instructions!

Removal

Conductive Cloth for TP IC as shown in picture.

Can't be reused, Scrap!

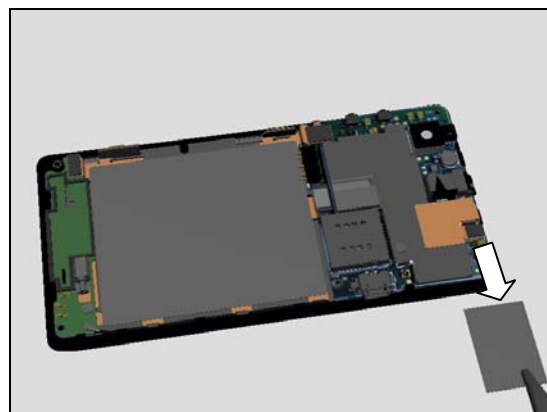
Be careful! Do not damage TP IC on FPC!



Remove the Conductive Cloth for TP IC carefully.

Can't be reused, Scrap!

Be careful! Do not damage TP IC on FPC!

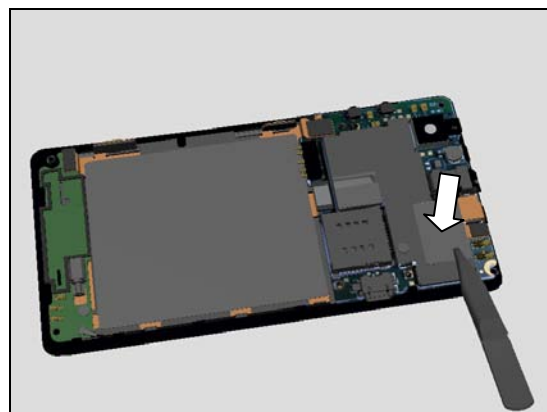


Installation

Attach a new Conductive Cloth for TP IC carefully.

Be careful! Do not damage TP IC on FPC!

Yellow film inside Cloth covers TP IC completely.



Replacement

4.6 Conductive cloth Main camera

Follow the 3.1 – 3.6 Disassembly instructions!

Prepare a new Conductive cloth Main camera

Follow the 5.1 – 5.6 Reassembly instructions!

Removal

Conductive Cloth Main camera as shown in picture.

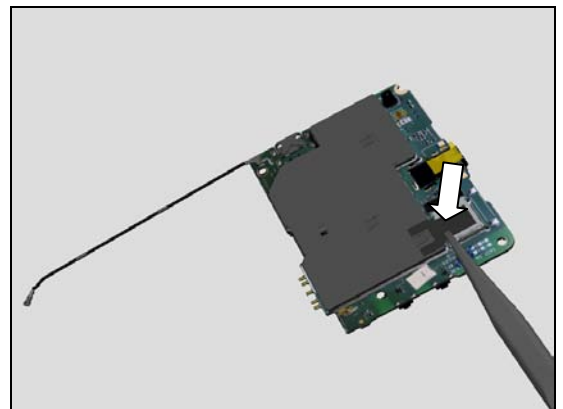
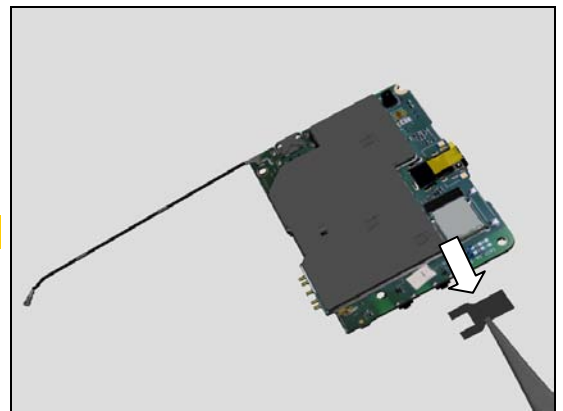
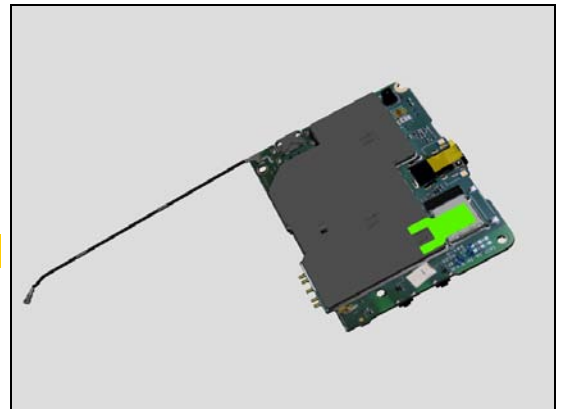
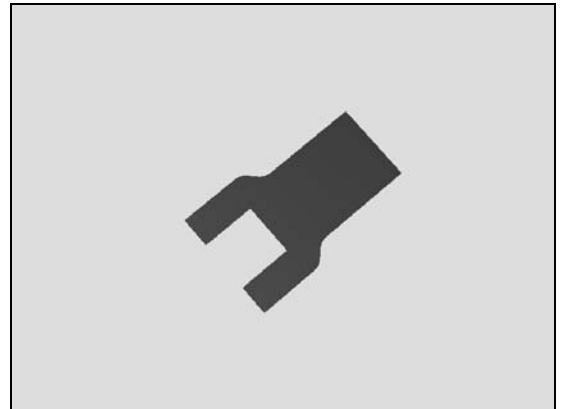
Can't be reused, Scrap!

Remove the Conductive Cloth Main camera carefully.

Can't be reused, Scrap!

Installation

Attach a new Conductive Cloth Main camera carefully.



Replacement

4.7 CU Label

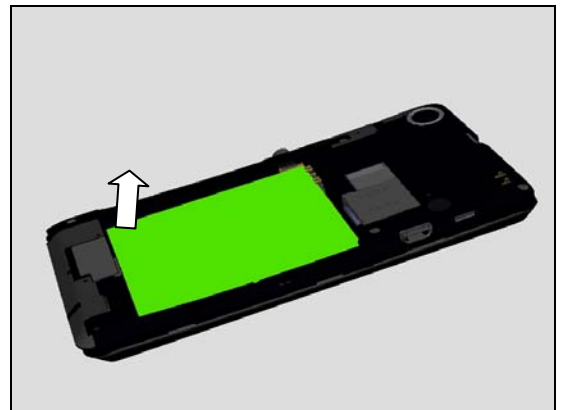
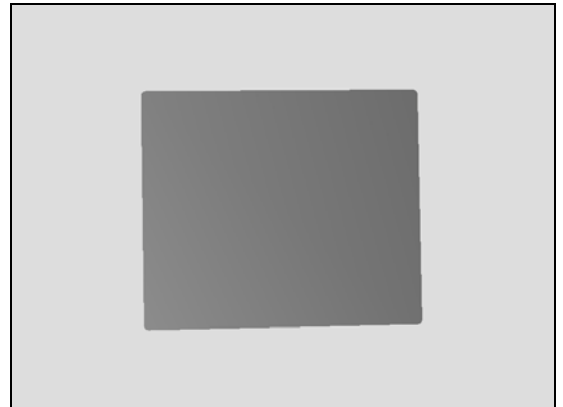
Follow the 3.1 – 3.2 Disassembly instructions!

Prepare a new CU Label.

Follow the 5.5 – 5.6 Reassembly instructions!

Removal

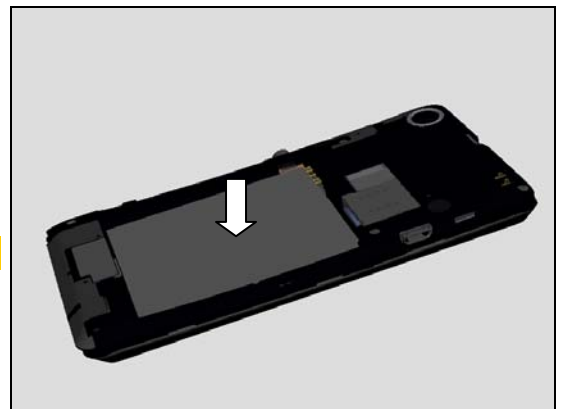
Peel off the CU label from the corner as arrow shown.



Installation

Attach a new CU Label carefully.

Only one Label is attached.



4.8 Screw

Follow the 3.1 – 3.3 Disassembly instructions!

Prepare new Screws.

Follow the 5.4 – 5.6 Reassembly instructions!



Replacement

4.9 Film Main Camera

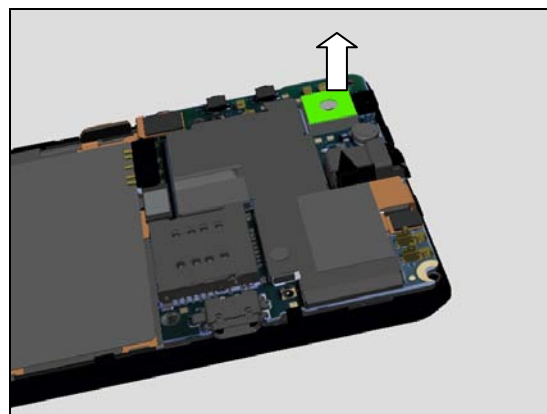
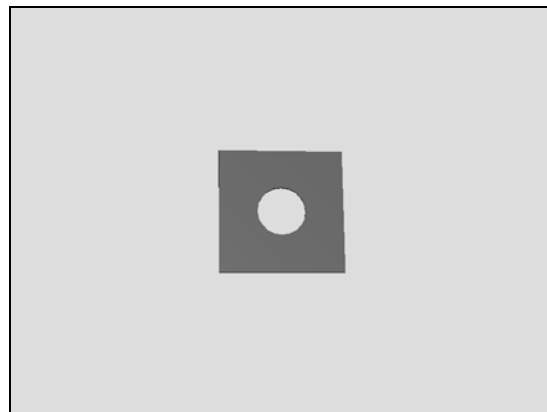
Follow the 3.1 – 3.3 Disassembly instructions!
 Carry out the Removal as described below.
 Prepare a new Film Main Camera.
 Carry out the Installation as described below.
 Follow the 5.4 – 5.6 Reassembly instructions!

REMOVAL

Remove the Film Main Camera.

Can't be reused, scrap!

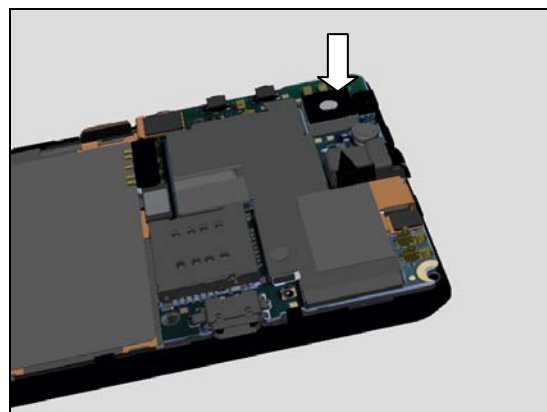
Be careful, do not damage Main Camera!



INSTALLATION

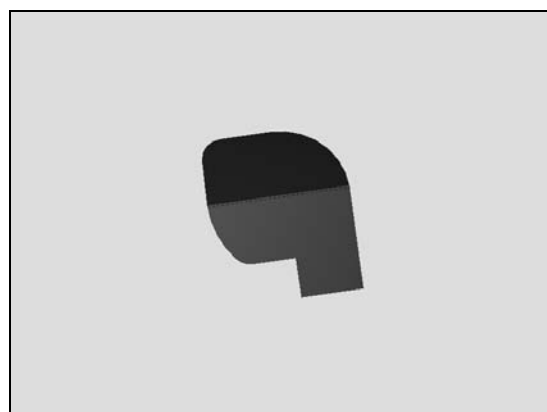
Place a new Film Main Camera in the correct position as shown in the picture.

Be careful, do not damage Main Camera!



4.10 Film RF Cable

Follow the 3.1 – 3.3 Disassembly instructions!
 Prepare a new Film RF Cable.
 Follow the 5.4 – 5.6 Reassembly instructions!



Replacement

4.11 Film RF Hole

Follow the 3.1 – 3.2 Disassembly instructions!

Carry out the Removal as described below.

Prepare a new Film RF Hole.

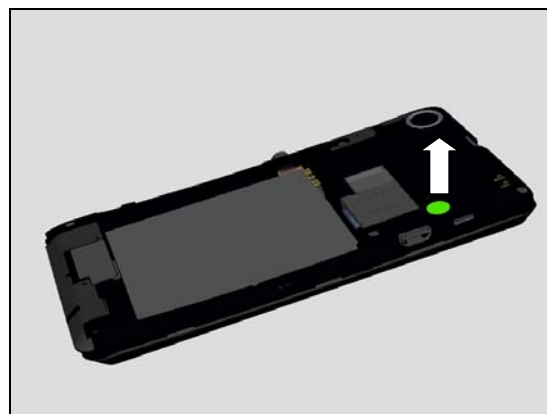
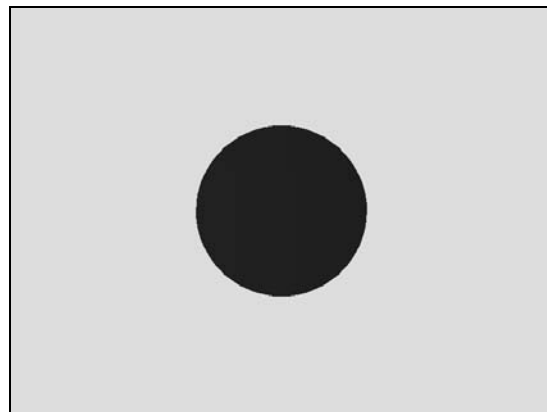
Carry out the Installation as described below.

Follow the 5.5 – 5.6 Reassembly instructions!

REMOVAL

Peel off the Film RF Hole.

Scrap! Not to be reused!

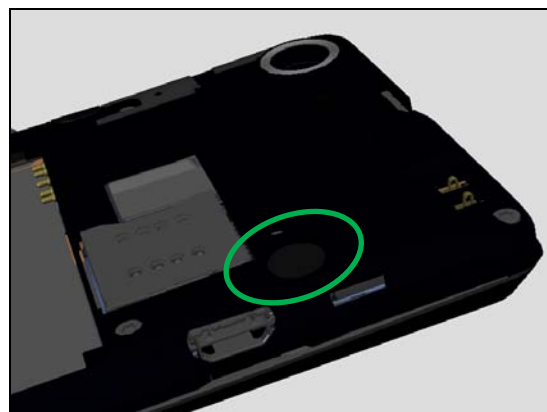


INSTALLATION

Place a new Film RF Hole in the correct position as shown in the picture.



Press to secure its attachment.



Replacement

4.12 Film Side Key

Follow the 3.1 – 3.3 Disassembly instructions!

Carry out the Removal as described below.

Prepare a new LCM connector sponge.

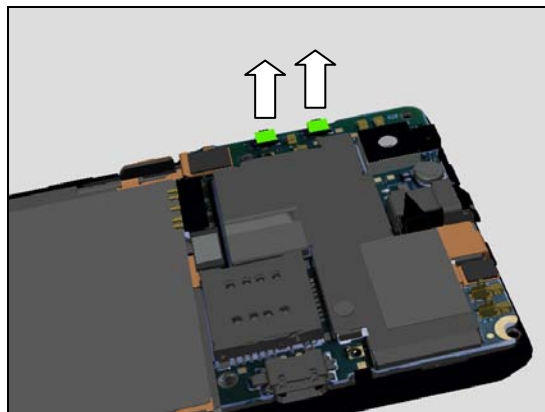
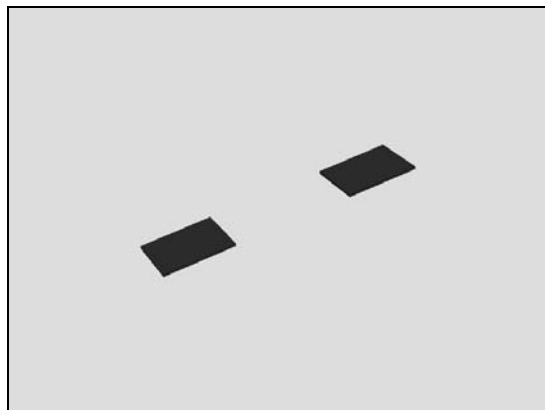
Carry out the Installation as described below.

Follow the 5.4 – 5.6 Reassembly instructions!

REMOVAL

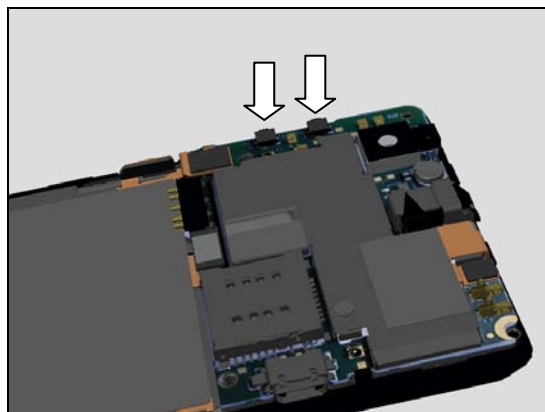
Peel off the Film Side Key.

Scrap! Not to be reused!

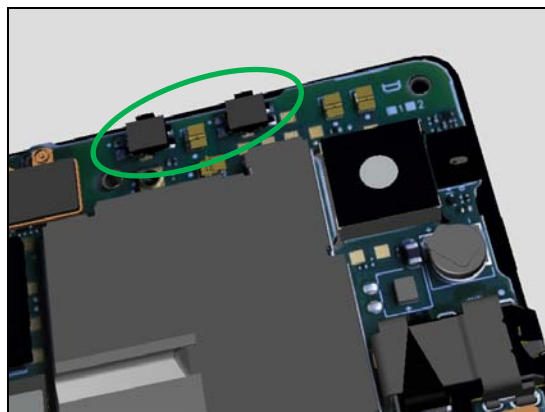


INSTALLATION

Place a pair of new Film Side Key in the correct position as shown in the picture.



Press to secure its attachment.



Replacement

4.13 NFC Antenna

Follow the 3.1 Disassembly instructions!

Carry out the Removal as described below.

Prepare a new NFC Antenna

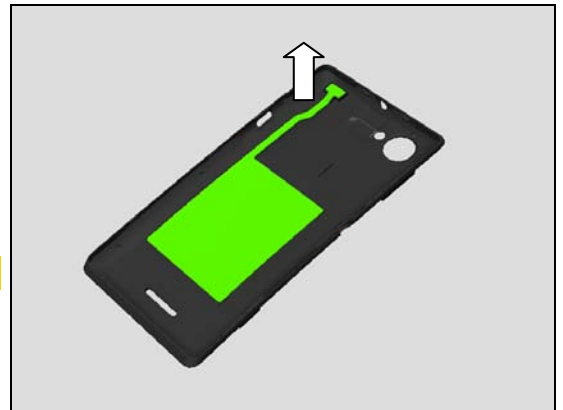
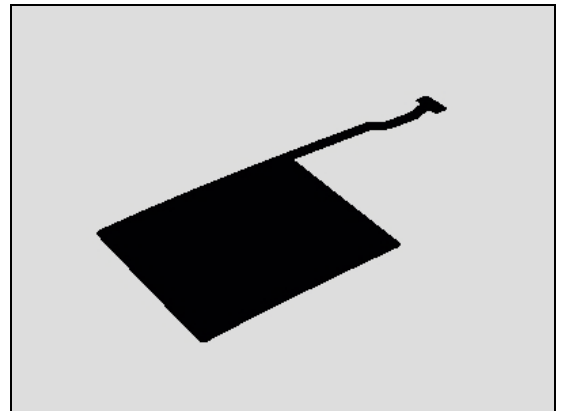
Carry out the Installation as described below.

Follow the 5.6 Reassembly instructions!

REMOVAL

Peel off the NFC Antenna.

Scrap! Not to be reused!



INSTALLATION

Place a new NFC Antenna in the correct position as shown in the picture.



Press to secure its attachment.



Replacement

4.14 Loudspeaker & Speaker Adhesive

Follow the 3.1 – 3.3 Disassembly instructions!

Carry out the Removal as described below.

Prepare a new Loudspeaker and Speaker Adhesive.

Carry out the Installation as described below.

Follow the 5.4 – 5.6 Reassembly instructions!

REMOVAL

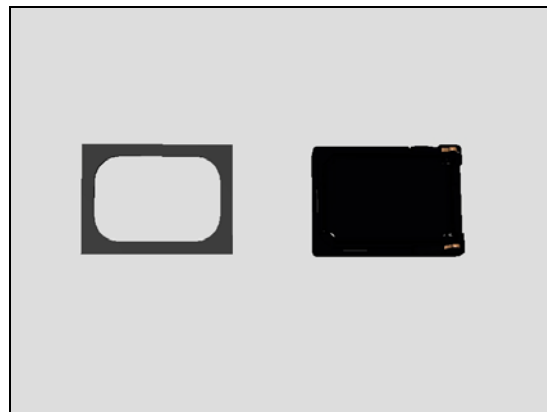
Detach the Loudspeaker by using a pair of tweezers.

Peel off the Speaker Adhesive.

Scrap! Not to be reused!

INSTALLATION

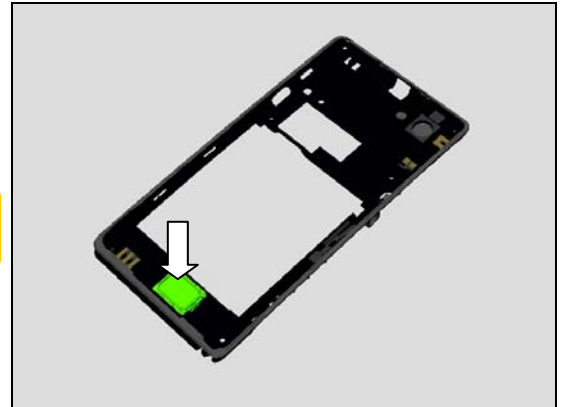
Place a new Speaker Adhesive in the correct position as shown in the picture.



Replacement

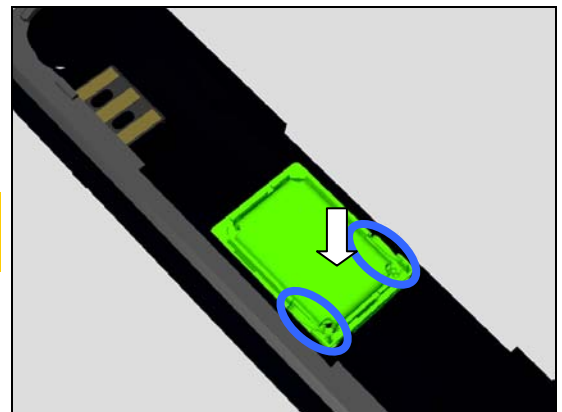
Place a new Loudspeaker in the correct position.

Make sure there is no adhesive residue on the back side of the Loudspeaker.



Press to secure its attachment.

***The pin direction should be as shown in the picture!
Do not touch the pins of the Loudspeaker!***



Replacement

4.15 Main Camera

Follow the 3.1– 3.5 Disassembly instructions!

Follow the 4.6 removal instructions.

Carry out the Removal as described below.

Prepare a new Main Camera.

Carry out the Installation as described below.

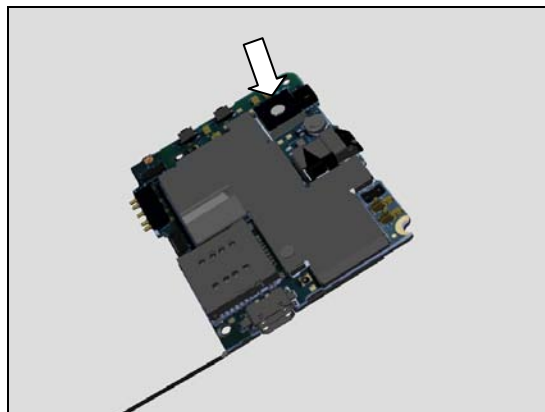
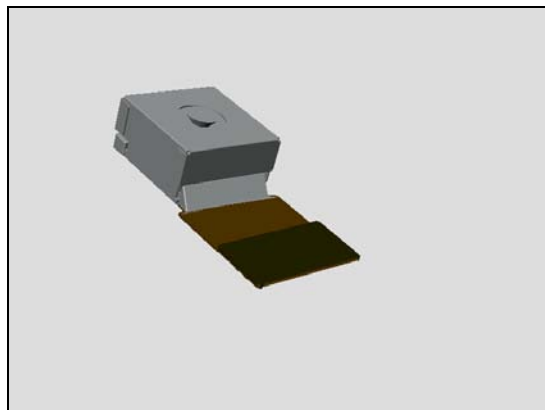
Follow the 4.9 Installation instructions.

Follow the 4.6 Installation instructions.

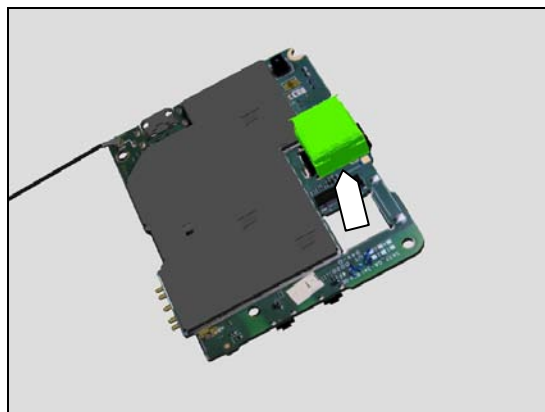
Follow the 5.2 – 5.6 Installation instructions!

REMOVAL

Push the Main Camera to release it from the cavity as shown in picture.

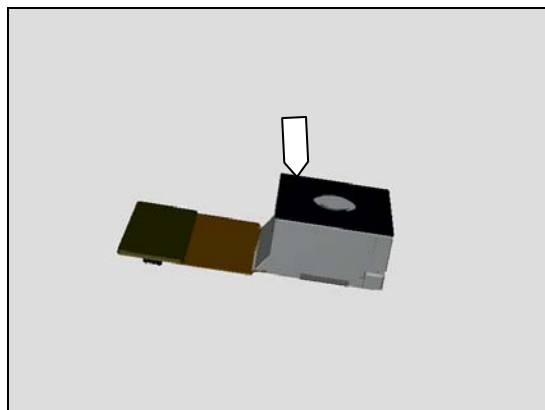


Unsnap the BtB connector and remove the Main Camera.



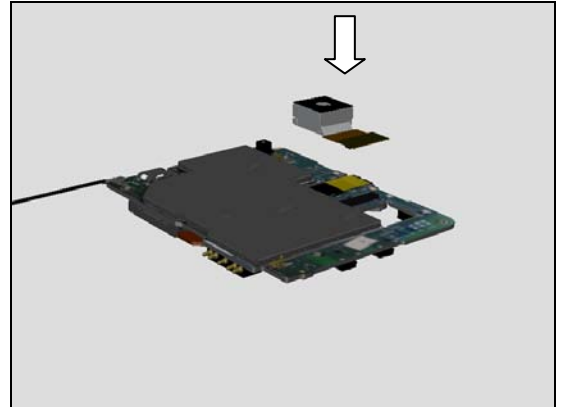
INSTALLATION

Attach a new Film Main Camera on Main Camera carefully.

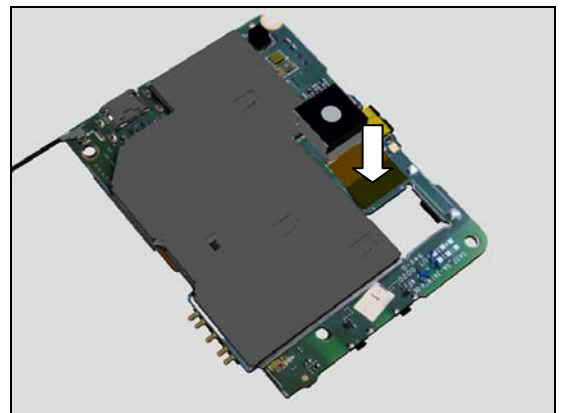


Replacement

Assemble the Main Camera onto Main PBA.

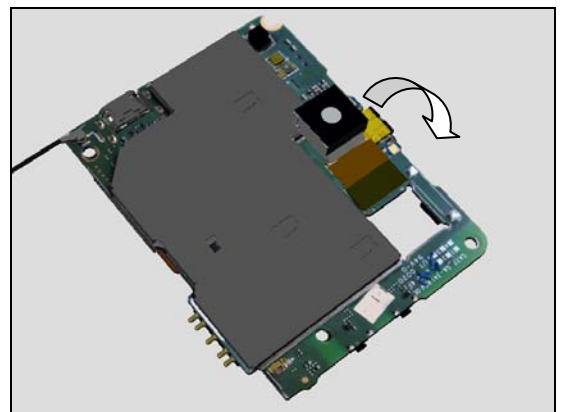


Snap the BtB connector on Main PBA firstly.



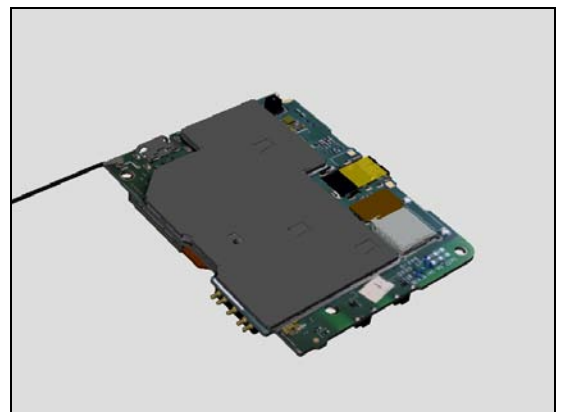
Turn around the Main Camera 180 degree into its cavity.

Note: Do not damage the Main Camera FPC!



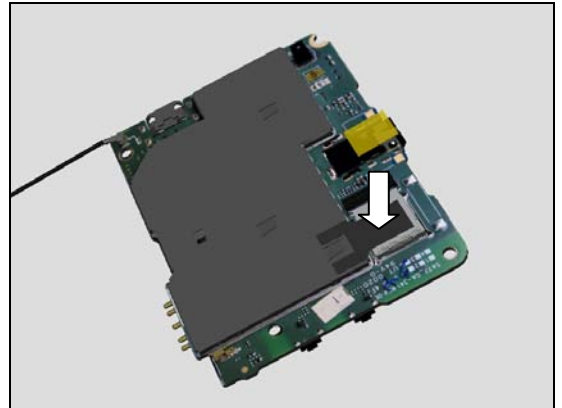
Put the Main Camera in its cavity on Main PBA.

Note: Do not damage the Main Camera FPC!

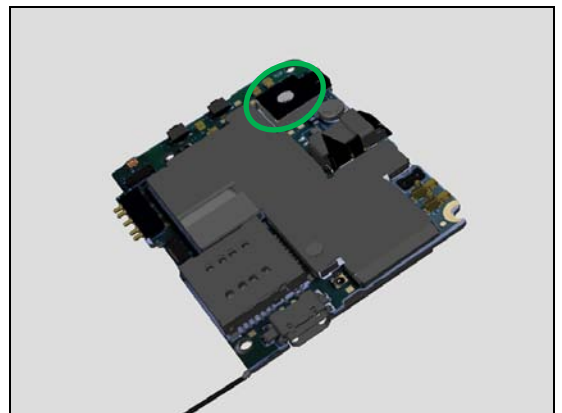


Replacement

Attach a new Conductive Cloth Main camera.



Inspect the Main Camera at its cavity from front side.



Replacement

4.16 Rubber PL Sensor

Follow the 3.1 – 3.6 Disassembly instructions!

Carry out the Removal as described below.

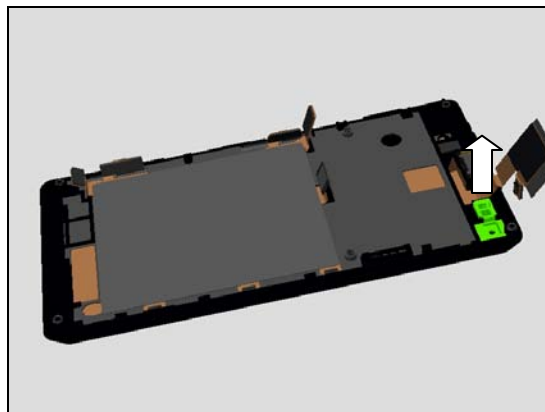
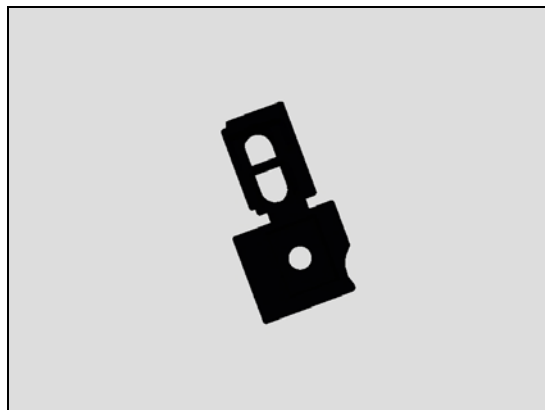
Prepare a new Rubber PL Sensor.

Carry out the Installation as described below.

Follow the 5.1 – 5.6 Reassembly instructions!

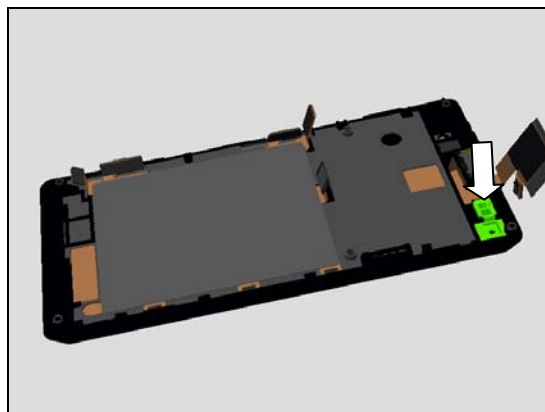
REMOVAL

Remove the Rubber PL Sensor by using a Flex Film Assembly Tool.

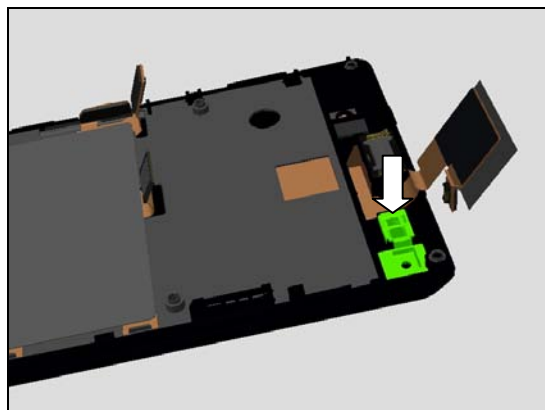


INSTALLATION

Place a new Rubber PL Sensor in the correct position as shown in the picture.



Press to secure its position.



Replacement

4.17 Earspeaker & Receiver Adhesive

Follow the 3.1 – 3.6 Disassembly instructions!

Carry out the Removal as described below.

Prepare a new Earspeaker and Receiver Adhesive.

Carry out the Installation as described below.

Follow the 5.1 – 5.6 Reassembly instructions!

REMOVAL

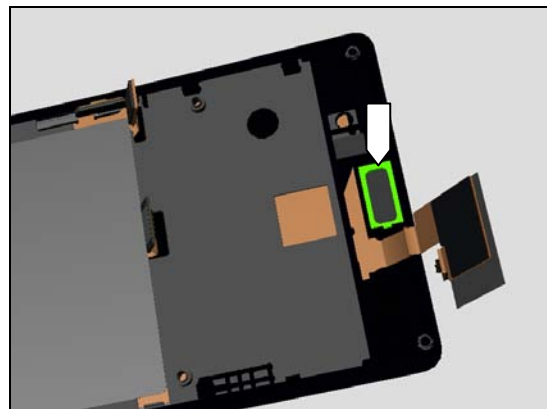
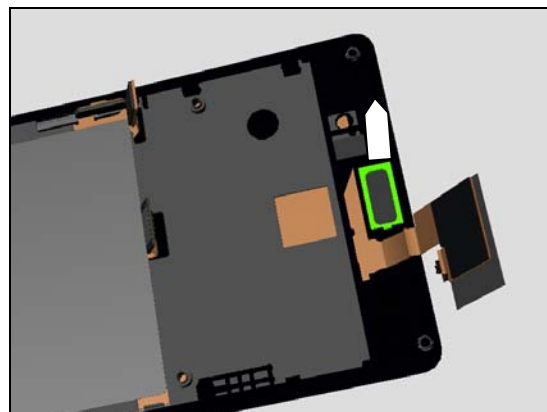
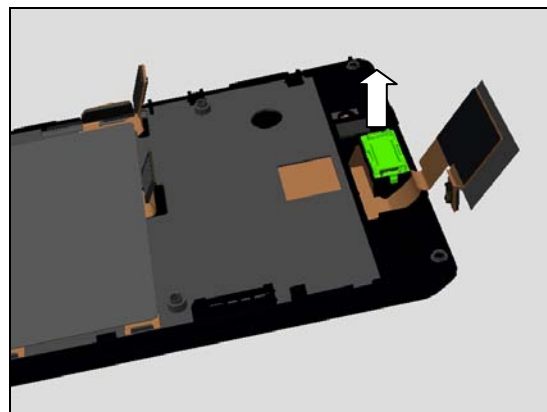
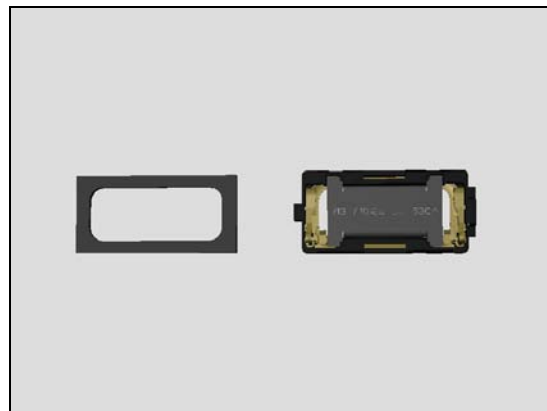
Detach the Earspeaker by using a pair of tweezers.

Clean the remaining foil of the Receiver Adhesive on the Front Housing LCM TP Assembly.

Scrap! The Receiver Adhesive can't be reused!

INSTALLATION

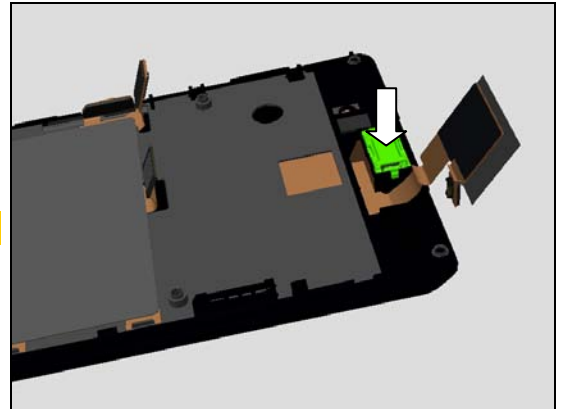
Place a new Receiver Adhesive in the correct position.



Replacement

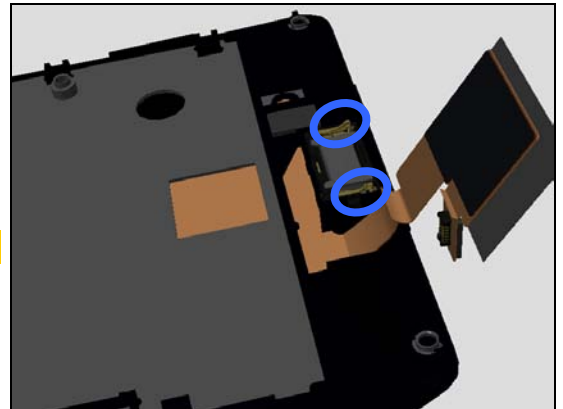
Place a new Earspeaker in the correct position.

Don't touch the Earspeaker pins!



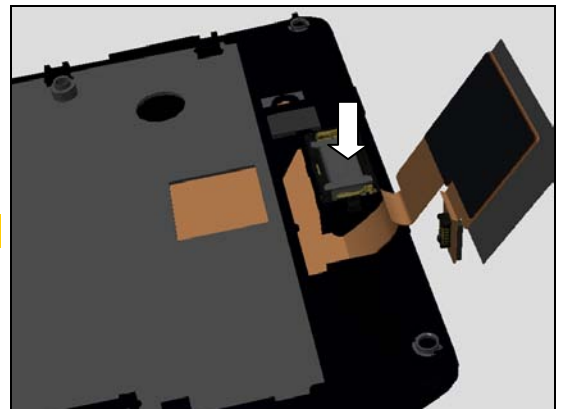
Check **Earspeaker's** pin correct direction as shown in the picture!

Don't touch the Earspeaker pins!



Press to secure its attachment.

Do not touch the Earspeaker pins!



Replacement

4.18 RF Cable

Follow the 3.1 – 3.5 Disassembly instructions!

Prepare a new RF Rubber.

Follow the 5.2 – 5.6 Reassembly instructions!

REMOVAL

Remove the RF Cable by using Front Opening Tool.

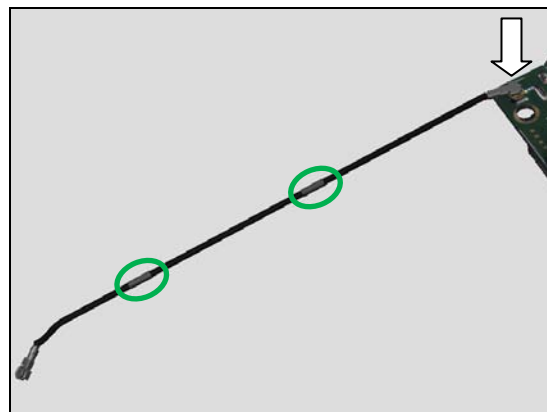
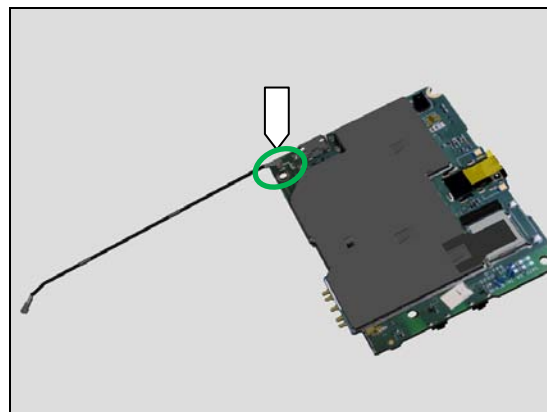
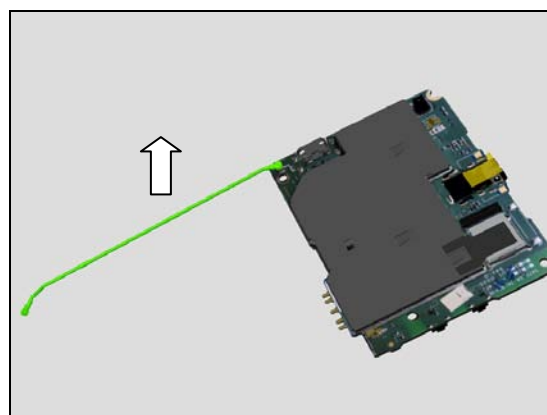
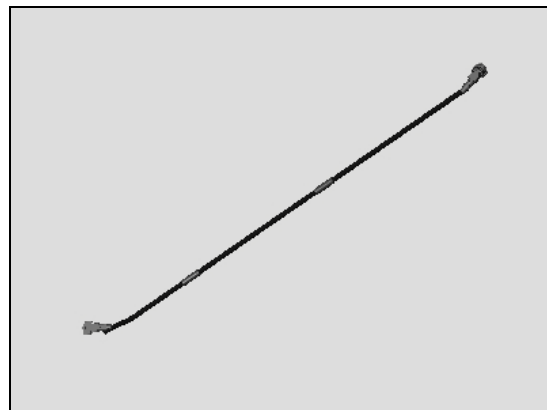
INSTALLATION

Place the RF Cable in the correct position.

Note: the long metal side is at Main PBA side.

Press to secure its position.

Note: the long metal side is at Main PBA side.



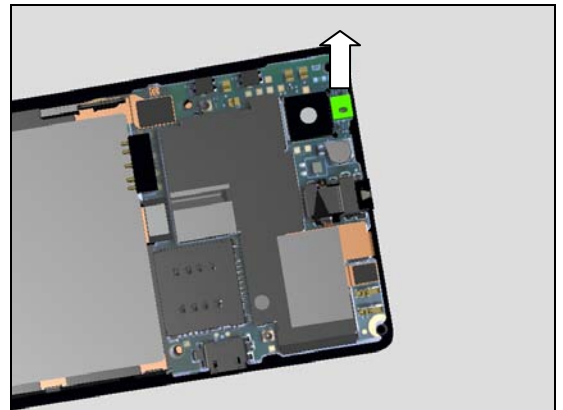
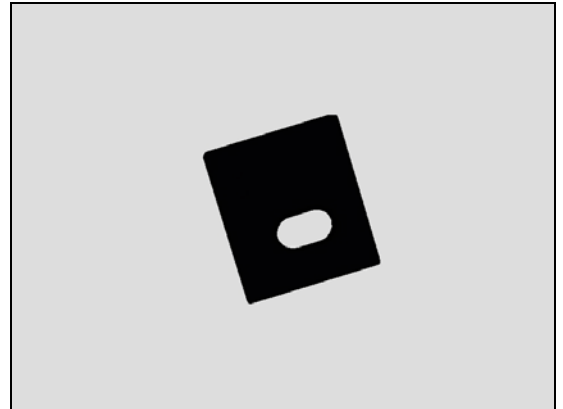
Replacement

4.19 Rubber 2nd MIC

Follow the 3.1 – 3.5 Disassembly instructions!
Carry out the Removal as described below.
Prepare a new Rubber 2nd MIC.
Carry out the Installation as described below.
Follow the 5.2 – 5.6 Reassembly instructions!

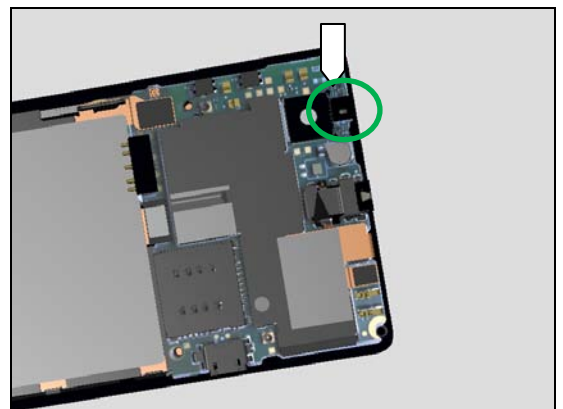
REMOVAL

Detach and remove the Rubber 2nd MIC.



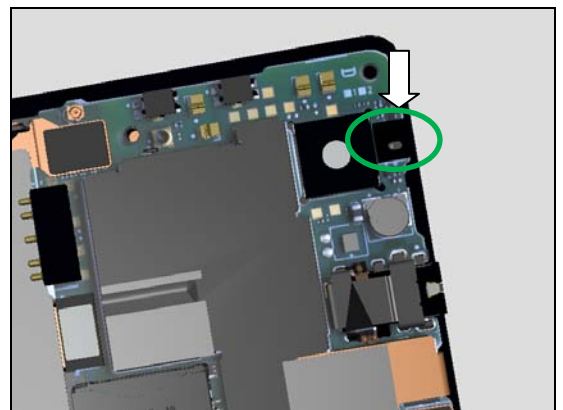
INSTALLATION

Place a new Rubber 2nd MIC in the correct position.



Press to secure its position.

Note: Pay more attention about the Rubber Hole direction.



Replacement

4.20 Power Key

Follow the 3.1 – 3.4 Disassembly instructions!

Carry out the Removal as described below.

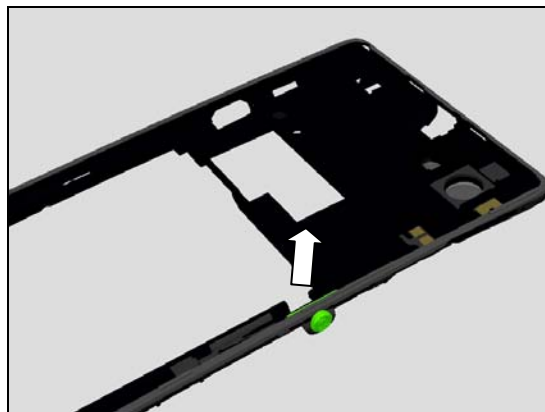
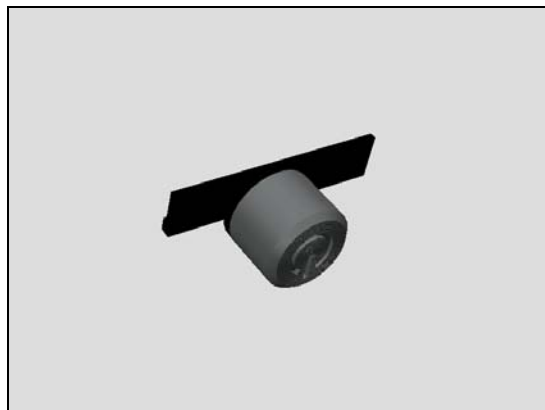
Prepare a new Power Key.

Carry out the Installation as described below.

Follow the 5.4 – 5.5, 5.7 – 5.8 Reassembly instructions!

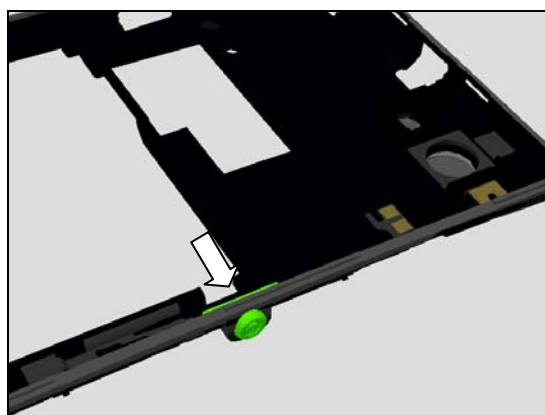
REMOVAL

Release the Power Key from the guiding slot by using a Flex Film Assembly Tool and remove it.

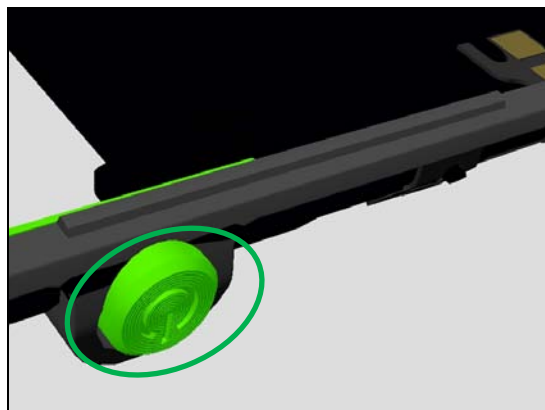


INSTALLATION

Place the Power Key in the correct position.



Pay more attention about the Power Key direction.



Replacement

4.21 Rubber Main MIC

Follow the 3.1 – 3.4 Disassembly instructions!

Carry out the Removal as described below.

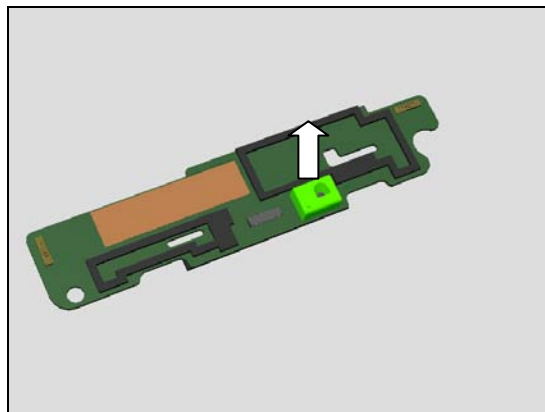
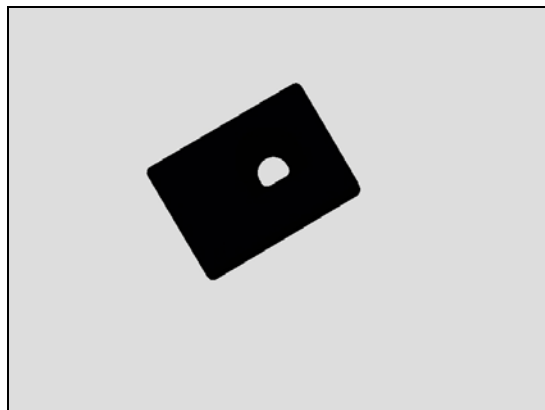
Prepare a new Rubber Main MIC.

Carry out the Installation as described below.

Follow the 5.3 – 5.6 Reassembly instructions!

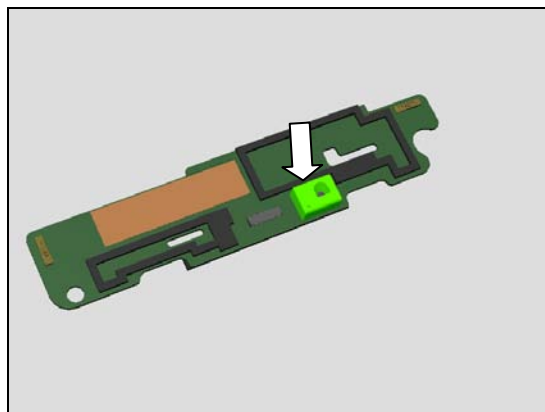
REMOVAL

Remove the Rubber MIC from Sub PBA Assembly.

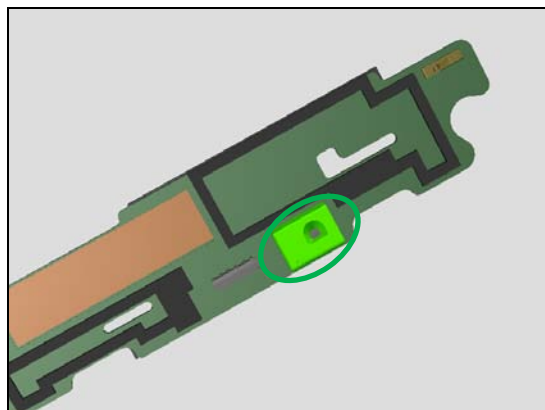


INSTALLATION

Prepare a new Rubber Main MIC.



Pay attention to the Rubber hole locating direction for Main MIC.



Replacement

4.22 Water Intrusion Label

Follow the 3.1 – 3.3 Disassembly instructions!

Carry out the Removal as described below.

Prepare the new Water Intrusion Label.

Carry out the Installation as described below.

Follow the 5.4 – 5.6 Reassembly instructions!

REMOVAL

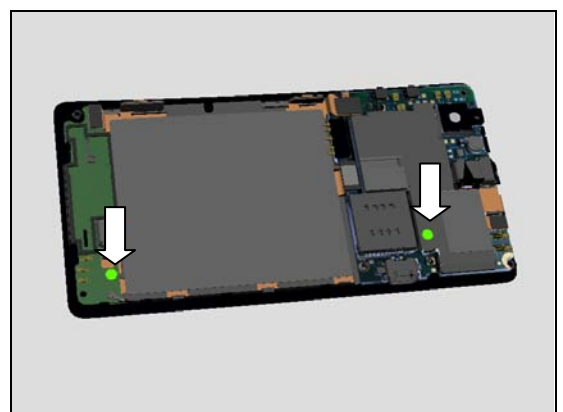
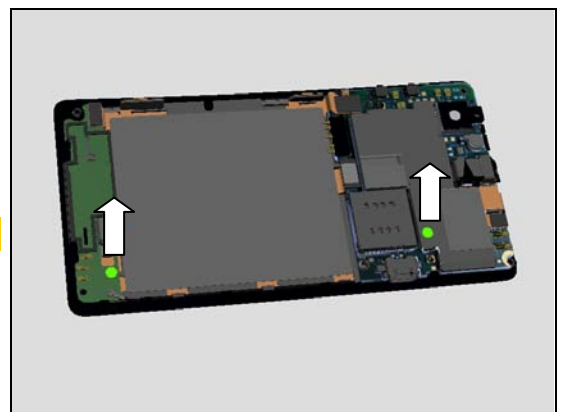
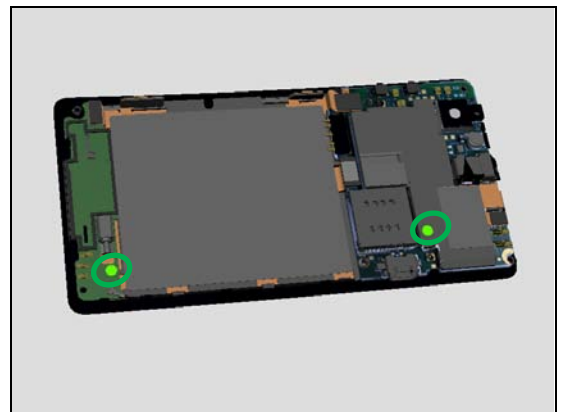
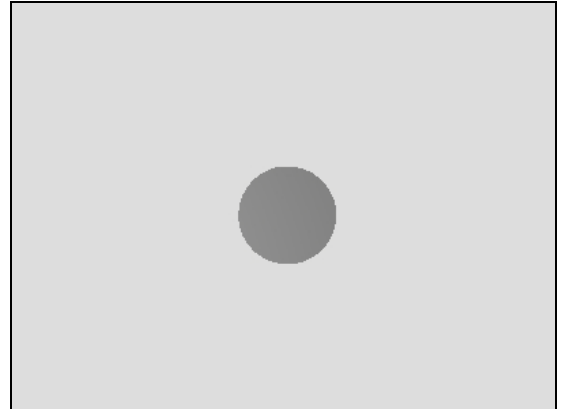
There are two Water Intrusion Labels on the phone as shown in the picture.

Detach the Water Intrusion Labels.

Scrap! Not to be reused!

INSTALLATION

Place pair of new Water Intrusion Label in the correct position.



Replacement

4.23 Label NFC

Follow the 3.1 – 3.3 Disassembly instructions!

Carry out the Removal as described below.

Prepare the new Label NFC.

Carry out the Installation as described below.

Follow the 5.4 – 5.6 Reassembly instructions!

REMOVAL

Remove the Label NFC from battery cover.

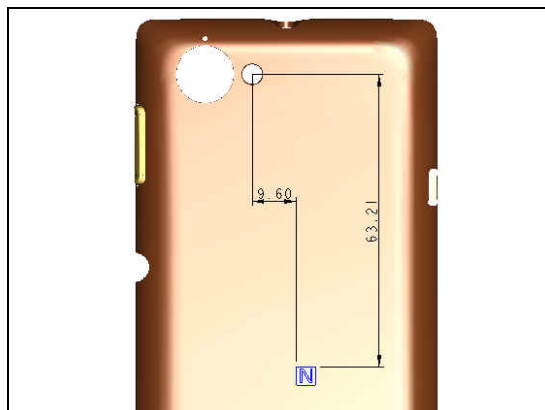
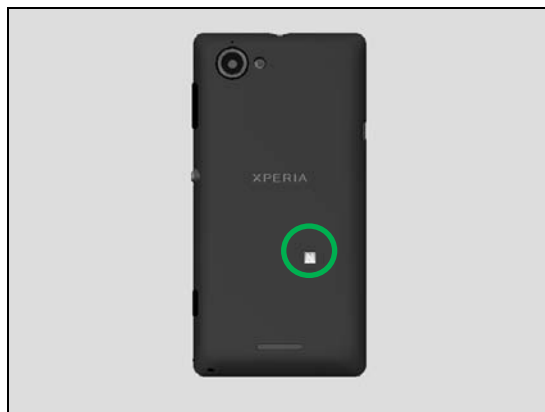
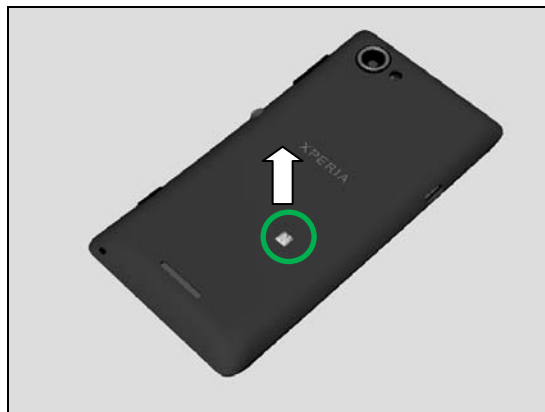
Scrap! Not to be reused!

INSTALLATION

Attach a new Label NFC on battery cover.

Label NFC position is shown in picture. (unit: mm)

Pay more attention about Label NFC direction.



Replacement

4.24 TP IC Adhesive

Follow the 3.1 – 3.3 Disassembly instructions!
Carry out the Removal as described below.
Prepare the new TP IC Adhesive.
Carry out the Installation as described below.
Follow the 5.4 – 5.6 Reassembly instructions!

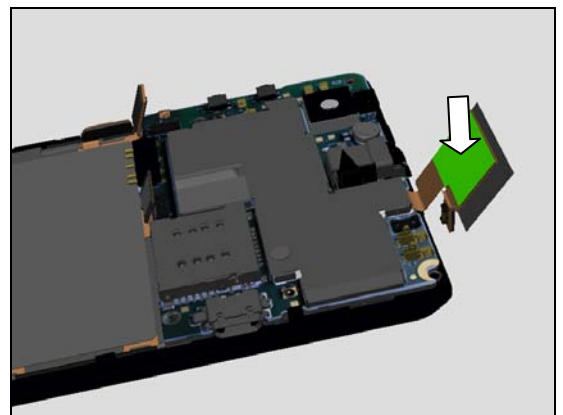
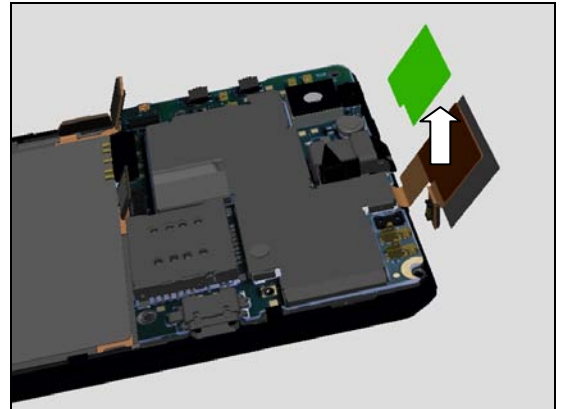
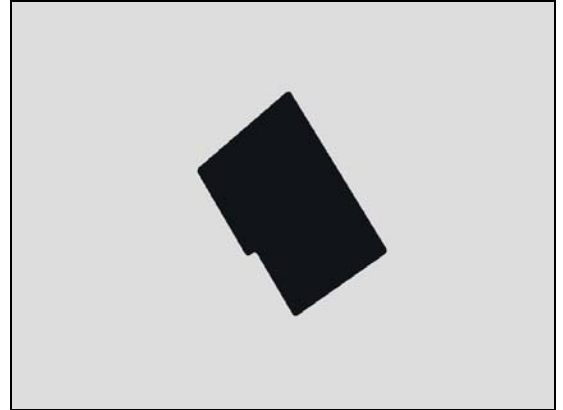
REMOVAL

Remove the TP IC Adhesive from TP FPC.

Scrap! Not to be reused!

INSTALLATION

Attach a new TP FPC Adhesive on TP FPC.



Replacement

4.24 Board Swap – Replacement

Follow the 3.1 – 3.6 Disassembly instructions!

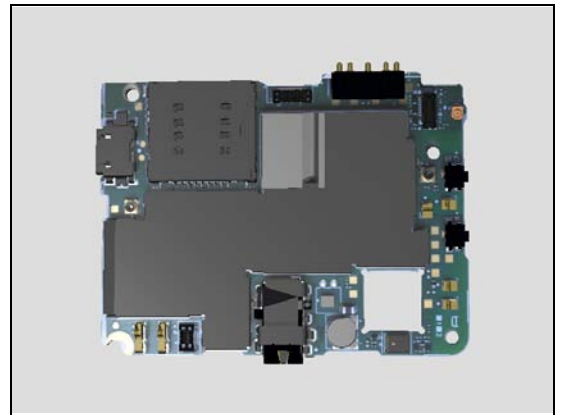
Follow the 4.6, 4.15 Removal instructions!

Replace the Swap Board.

Follow the 4.15, 4.6, 4.9, 4.12, 4.22 Installation instructions!

Follow the 5.1 – 5.6 Reassembly instructions!

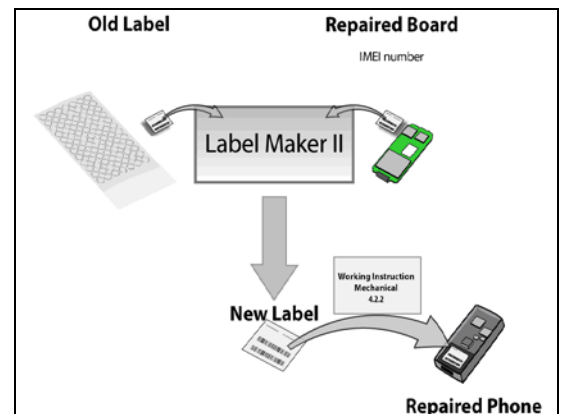
Note: Calibrate the Touch Panel/ Proximity sensor/Light sensor 1275-0758 Trouble Shooting Application – mechanical after replacement.



4.25 Board Swap – Change Label

CHANGE LABEL

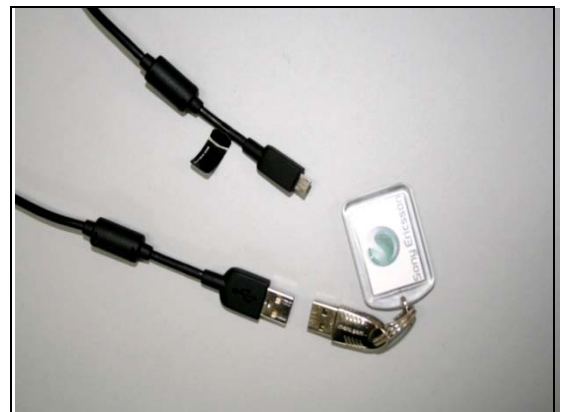
Follow the instructions in the Generic Repair Manual – Build swap for change of label.



4.26 Board Swap – Customize of Software

CUSTOMIZE OF SOFTWARE

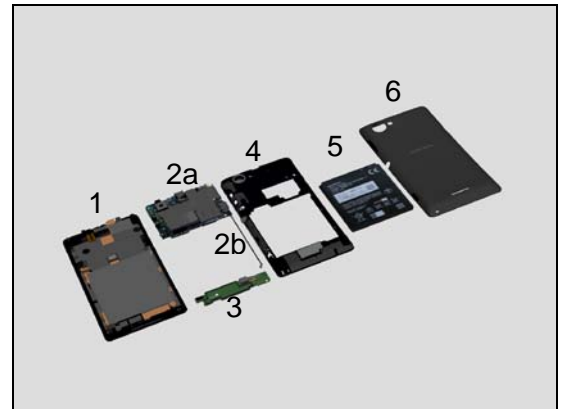
Follow the instructions in the Generic Repair Manual – Build swap for customization of the software.



5 Reassembly

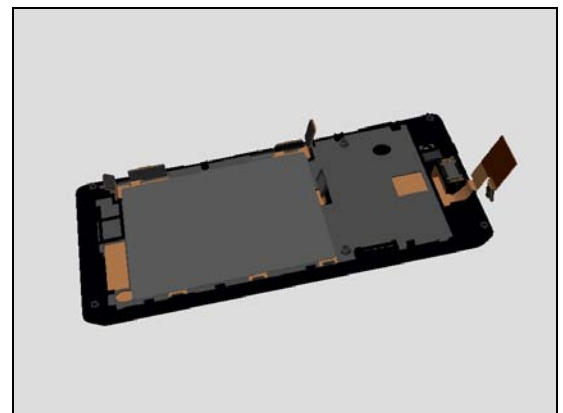
The reassembly is done in the following order:

1. Front Housing LCM TP Assembly
2. Main PBA (a) & RF Cable (b)
3. Sub PBA assembly
4. Middle Frame Assembly
5. Battery
6. Battery Cover

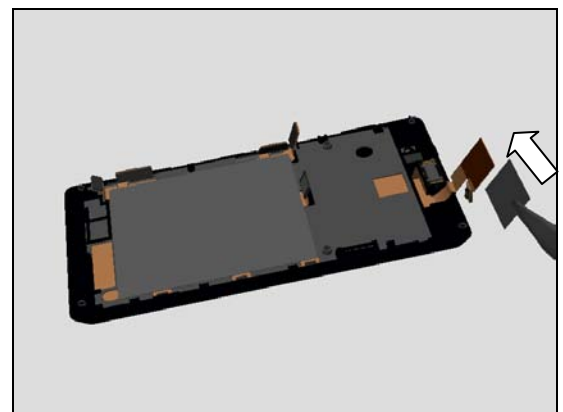


5.1 Front Housing LCM TP Assembly

Prepare the Front Housing LCM TP Assembly.

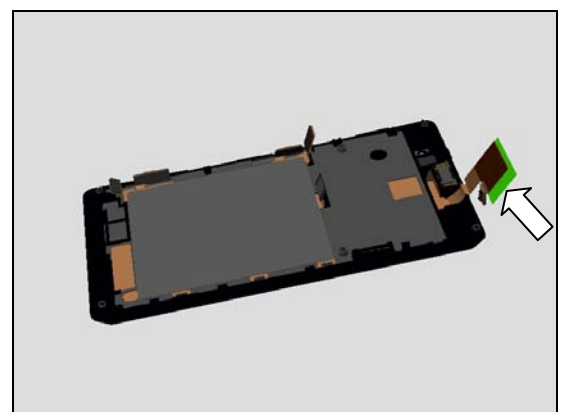


Assemble a new Conductive cloth for TP IC.



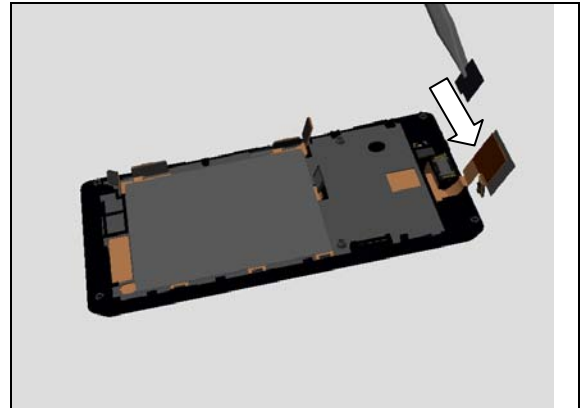
Attach the new Conductive cloth for TP IC at correct position.

Note: Yellow Film inside cloth covers TP IC completely.

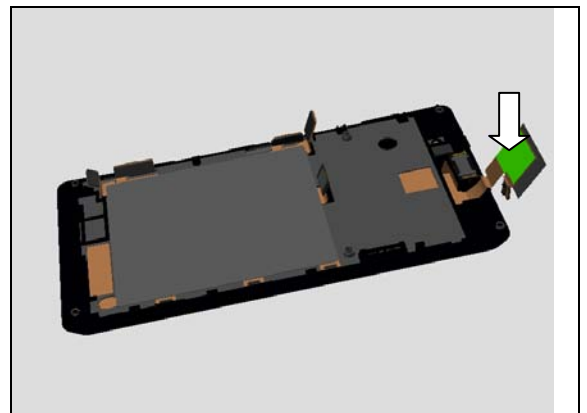


Reassembly

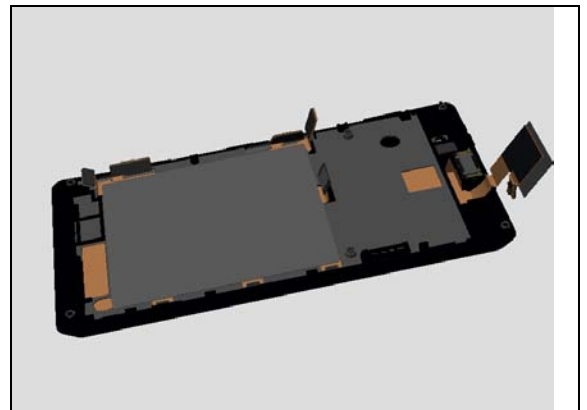
Assemble a new TP FPC adhesive.



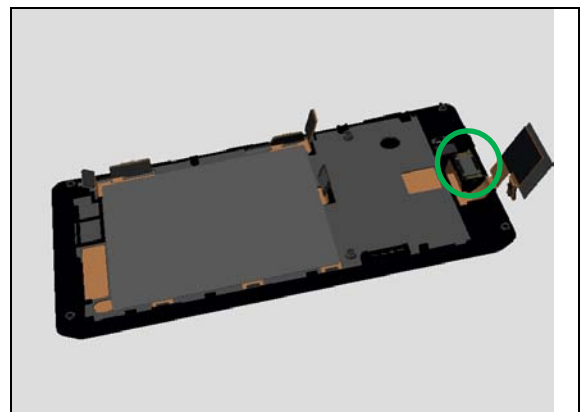
Attach the new TP FPC adhesive at correct position.



Front Housing LCM TP Assembly with New TP FPC Adhesive and new Conductive Cloth for TP IC.



Check Earspeaker pins and its direction are correct.



Reassembly

5.2 Main PBA (a) & RF Cable (b)

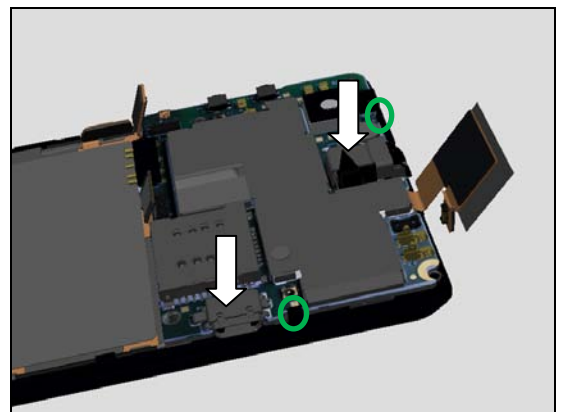
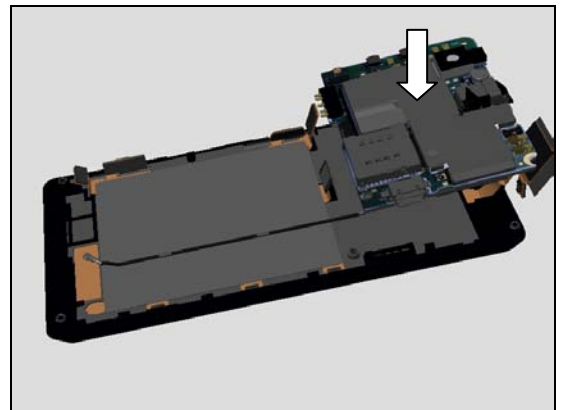
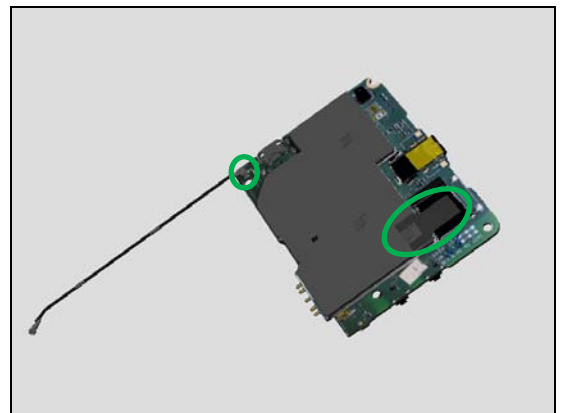
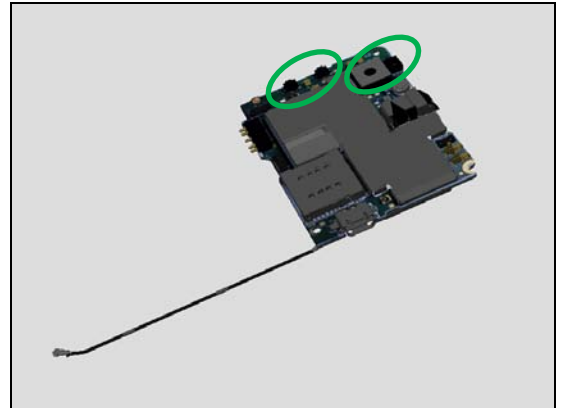
Prepare Main PBA and RF cable.

Check Rubber 2nd MIC, Film main Camera, and Film side key on position.

Check RF Cable connector and Conductive cloth for Main Camera on position.

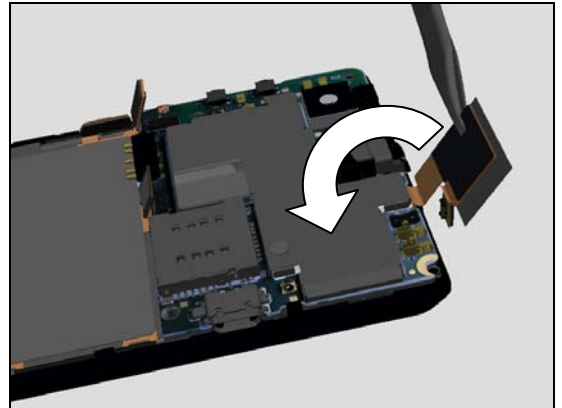
Assemble Main PBA and RF Cable onto Front Housing LCM TP Assembly at correct position.

Press Main PBA to ensure two hooks well assembled.

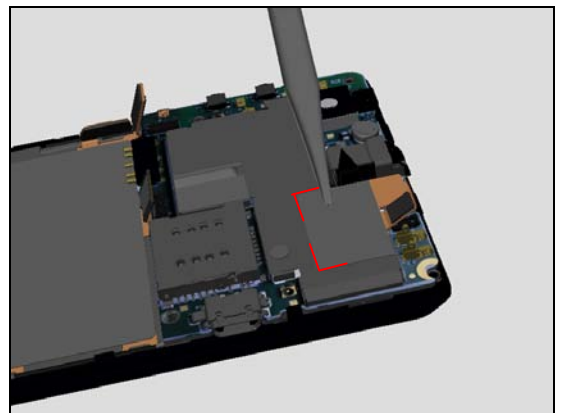


Reassembly

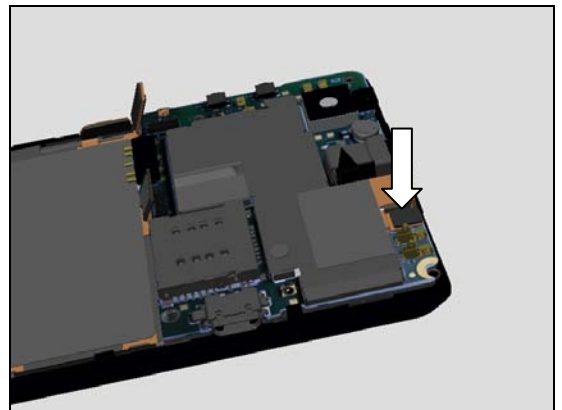
Turn around the TP FPC back on Main PBA.



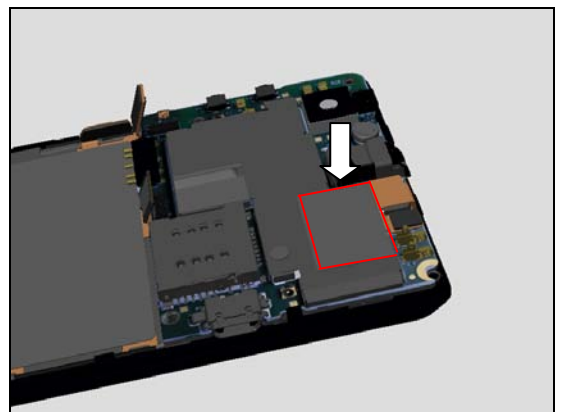
Place the Conductive Cloth for TP IC at Correct Position carefully.



Press the TP FPC connector onto Main PBA.

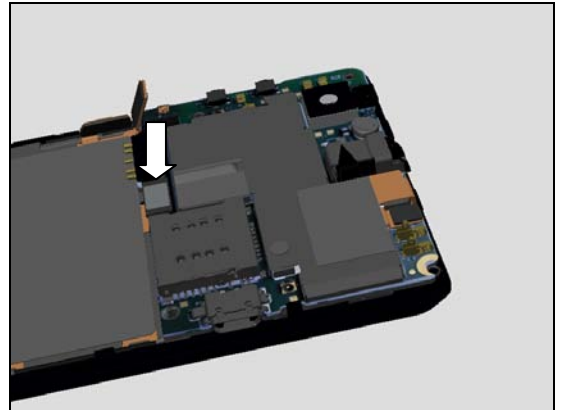


Press the Conductive Cloth for TP IC gently to secure it's well attached on shielding can.

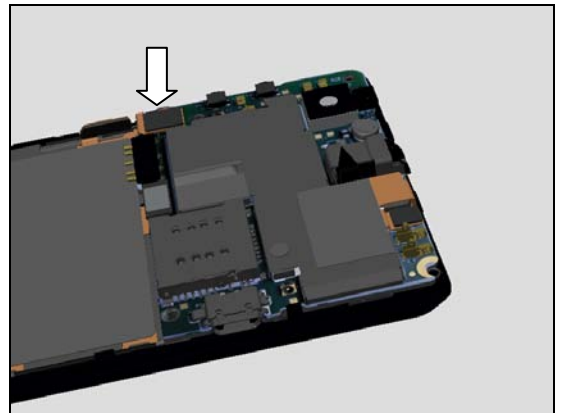


Reassembly

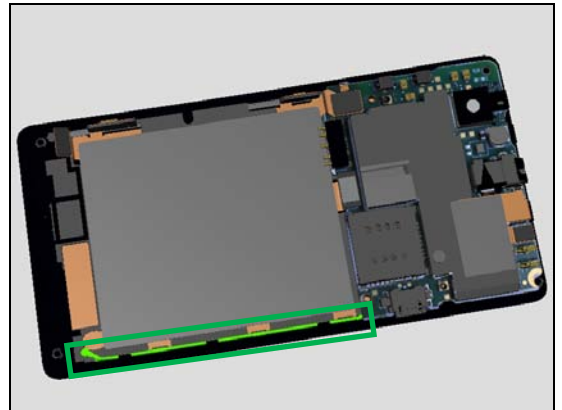
Press the LCM connector onto Main PBA.



Press the Side key FPC connector onto Main PBA.

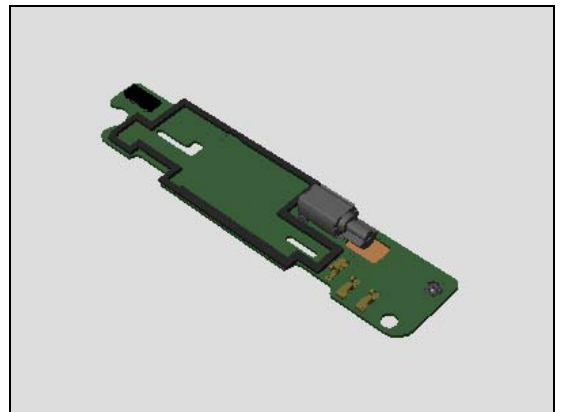


Insert the RF cable back into front housing hooks.



5.3 Sub PBA Assembly

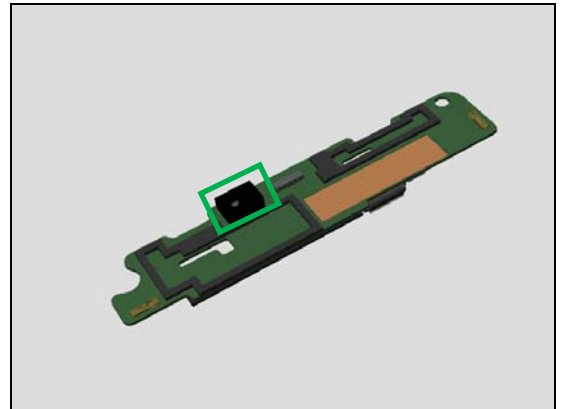
Prepare the Sub PBA Assembly



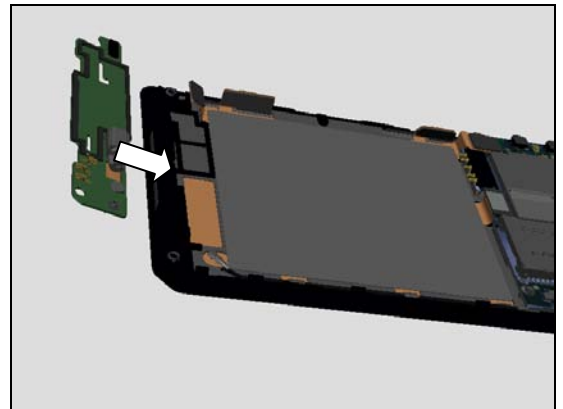
Reassembly

Check the Rubber Main MIC on position.

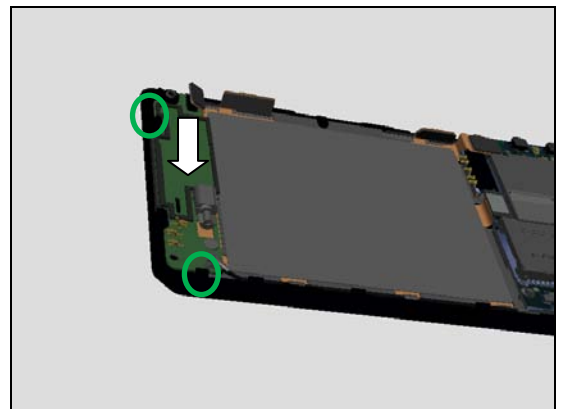
Note: check if the Rubber hole locating direction is correct.



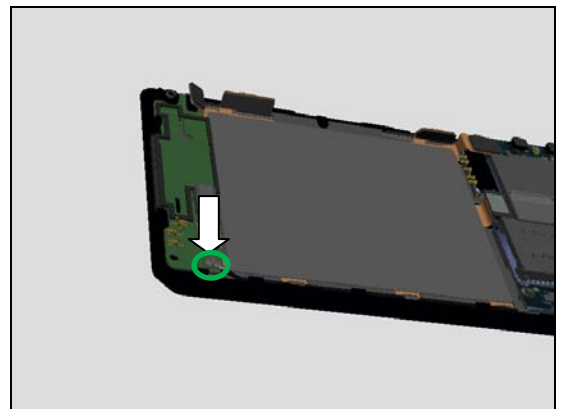
Place Sub PBA Assembly on correct position.



Press the Sub PBA Assembly to ensure its hooks are well assembled.

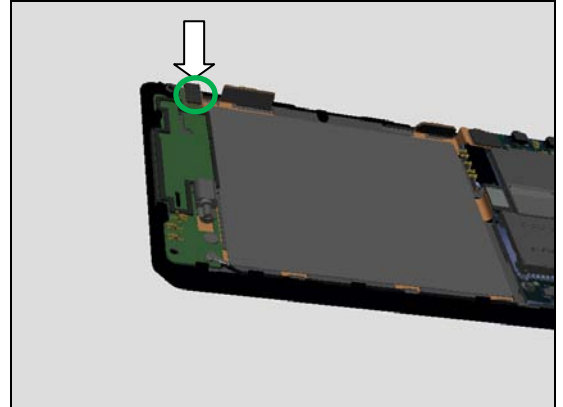


Press the RF Cable connector onto Sub PBA Assembly.



Reassembly

Press the Side key FPC connector onto Sub PBA Assembly.

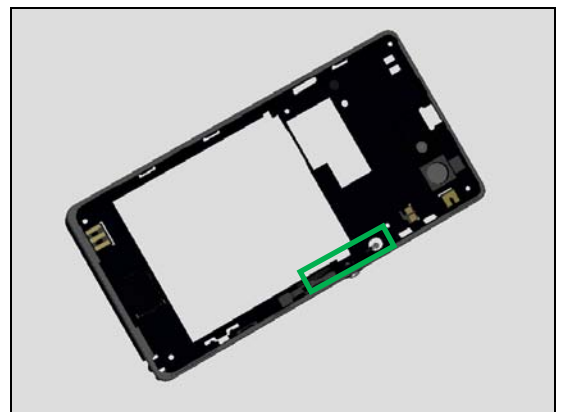


5.4 Middle Frame Assembly

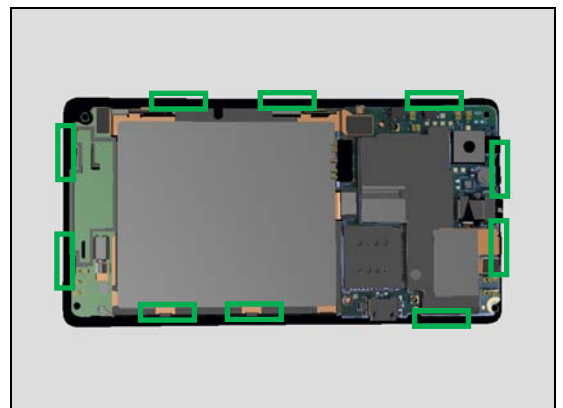
Prepare the Middle Frame Assemble.



Press the RX diversity Cable back into its cavity on Middle Frame Assembly.

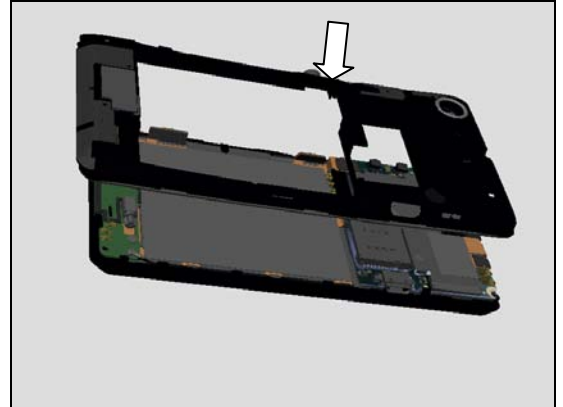


There are 10 hooks around Front Housing Assembly.

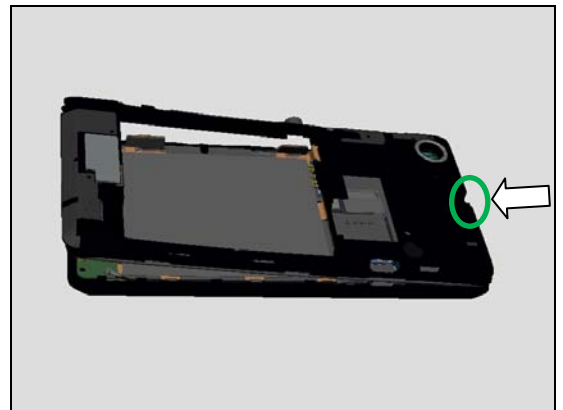


Reassembly

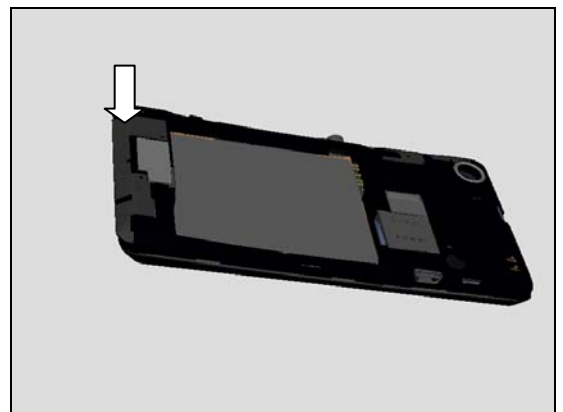
Secure the correct position of Middle Frame Assembly back.



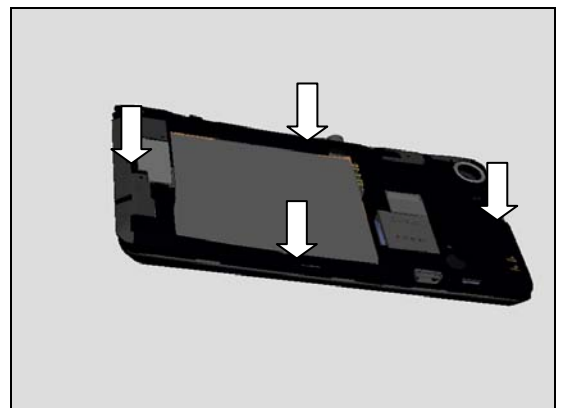
Assemble the Top side first while inserting the audio Jack connector.



Press down the Bottom side of Middle Frame Assembly.

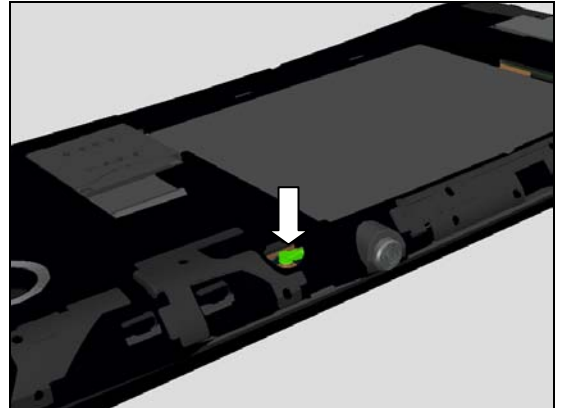


Press on all four sides around Middle Frame Assembly securing all hooks

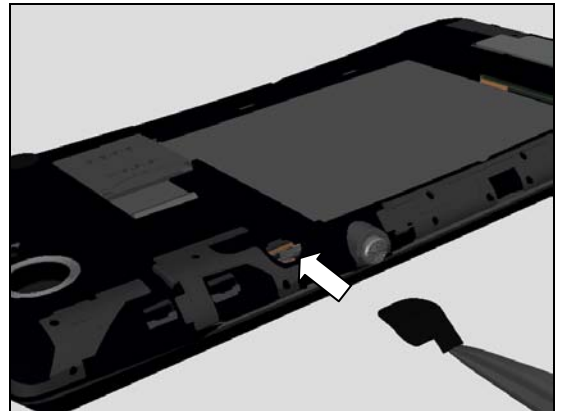


Reassembly

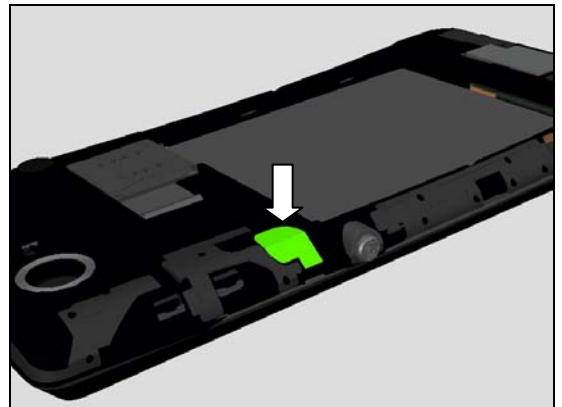
Press the RX diversity cable connector onto Main PBA through its hole.



Place a new Film RF Cable onto Middle Frame Assemble at its correct position for hole.



Press to secure its position and inspect its fully attached.

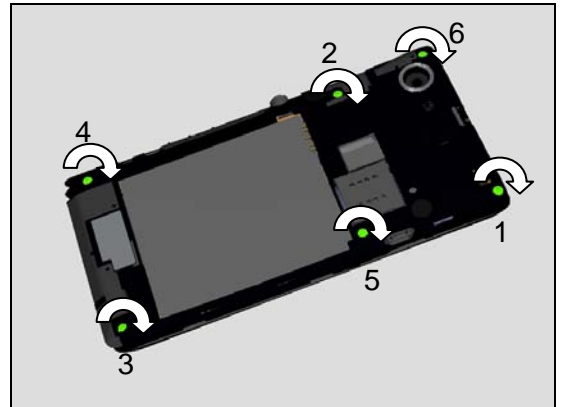


Assemble the six screws.



Reassembly

Apply 8 N.cm torque when tightening these six Screws with Bits (T5) in shown sequence.



5.5 Battery

Place the battery into the socket as shown in picture.



Press to secure its position.



5.6 Battery Cover

Place the Battery Cover from bottom side first.



Reassembly

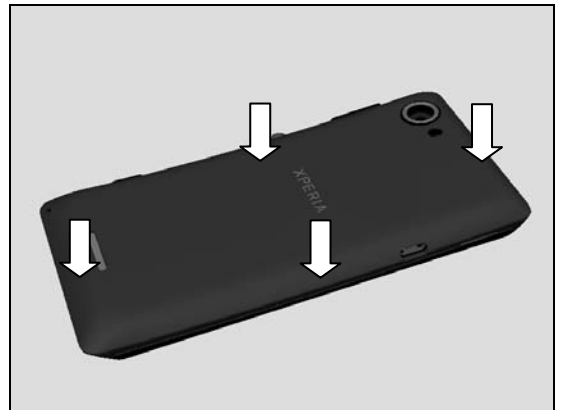
Assemble bottom side first



Press down on top side of Battery Cover.



Press all four sides to secure its position.



6 Country of Origin Barcodes for Brazil/VIVO Labels

Below is a link to a list of countries of origin. If you are printing a Brazil or VIVO label, scan the barcode corresponding to the correct country of origin for the “Fabricado” field.

7 Revision History

Rev.	Date	Changes / Comments
1	2013-04-22	Initial release
2	2013-04-27	Add chapter 6
3	2013-11-18	Update the chapter 4.4